



**Ministry of Environment
of Denmark**

Environmental
Protection Agency

Danish consumption and emission of F-gases in 2019

Environmental Project
no. 2161

February 2021

Publisher: Miljøstyrelsen

Editing:

Mikkel Aaman Sørensen, MFVM

Ole-Kenneth Nielsen, Department of Environmental Science, Aarhus University

Tomas Sander Poulsen, Provice ApS

Kim Valbum, AKB

Nikolaj Stubkjær Nilsen, Confederation of Danish Industries (DI)

ISBN: 978-87-7038-274-8

The Danish Environmental Protection Agency publishes reports and papers about research and development projects within the environmental sector, financed by the Agency. The contents of this publication do not necessarily represent the official views of the Danish Environmental Protection Agency. By publishing this report, the Danish Environmental Protection Agency expresses that the content represents an important contribution to the related discourse on Danish environmental policy.

Sources must be acknowledged.

Contents

Foreword	4
Summary	5
1.1 Full compliance with IPCC requirements	5
1.2 Danish consumption and emission of F-gases	5
1.2.1 Import	5
1.2.2 Emission	7
1.2.3 Trends in total GWP contribution from F-gases	10
2. Methodology	13
2.1 Scope and definition	13
2.2 IPCC requirements to emission factors, application areas and new F-gases	15
2.3 Explanation of terminology	16
3. F-gas import and consumption	17
3.1 Assessment of new F-gases	17
3.1.1 NF ₃	17
3.1.2 New HFC's	17
3.1.3 New PFC's	17
3.2 Import of substances	18
3.2.1 HFC's	18
3.2.2 Sulphur hexafluoride	19
3.2.3 Perfluorinated hydrocarbons	19
3.3 Consumption by categories	19
3.3.1 Consumption of HFC refrigerant	20
3.3.2 Consumption of HFC as blowing agent and as propellant	21
3.3.3 Consumption of SF ₆	21
3.3.4 Consumption of PFCs	22
3.3.5 Consumption of HFOs	22
4. Emission of F-gases	23
4.1.1 Emissions of HFCs from refrigerants	23
4.1.2 Emissions of HFCs from PUR foam products and propellants	27
4.1.3 Emissions of sulphur hexafluoride	29
4.1.4 Emissions of perfluorinated hydrocarbons	30
References	32
Appendix 2 Assessment of Good Practice Guidance compliance in DK F-gas calculation	37
Appendix 3 Specification of methods and assumptions	41

Foreword

On behalf of the Danish Environmental Protection Agency (Danish EPA), Provice has conducted the emission calculation and reporting of Danish emission of F-gases. The emission calculation is provided in continuation of previous years' emission calculations /32/ and references herein.

The emission calculations of F-gases are extrapolated to 2030 in compliance with the revised methods from IPCC.

Danish EPA and Department of Environmental Science, Aarhus University, and Provice assess the F-gas emission calculation and reporting. Further, the draft report is sent to central stakeholders for comments and general information. The assessment group consist of:

- Mikkel Aamand Sørensen, Danish EPA
- Ole-Kenneth Nielsen, Department of Environmental Science, Aarhus University
- Tomas Sander Poulsen, Provice ApS
- Kim Valbum, AKB
- Nikolai Stubkjær Nilsen, Confederation of Danish Industries (DI)

The objective of the project was to quantify the Danish consumption and actual emissions of F-gases (HFCs, PFCs, and SF₆) for 2019.

The emission calculation is partly conducted to fulfil Denmark's international obligations to provide data and information on F-gas emissions, and partly to assess the Danish trend in consumption and emissions of HFCs, PFCs, and SF₆. Examples of previous reporting of Danish emissions is given in reference /18, 19, 21, 23, 24, 26, 28, 31/, and most recently, in reference /32/.

The so-called F-gases are potent greenhouse gases and cause an increase in the ability of the atmosphere to retain surplus heat radiated from the earth. Consequently, the temperature of the earth's surface and lower atmosphere is rising and this leads to climate changes. There are several ozone-depleting substances that also have a strong greenhouse effect. These substances are regulated under the Montreal Protocol.

The potential effect of different greenhouse gases varies from substance to substance. This potential is expressed by a GWP value (Global Warming Potential). F-gases (HFCs, PFCs and SF₆) that do not have an ozone-depleting effect, but have high GWP values are regulated by the Kyoto Protocol under the United Nation Climate Change Convention, and in the EU regulation.

Summary

1.1 Full compliance with IPCC requirements

A number of new requirements to F-gas emission calculation have recently been introduced by United Nations Intergovernmental Panel for Climate Change (IPCC). The requirements comprise new F-gases, new emission factors for certain F-gases, new application areas and changes in product lifetime. Since 2015, the emission calculation has been in compliance with the new revised IPCC methodologies.

In 2019, the emission calculation of F-gases is improved further; the new refrigerant HFC-452A are applied for the category “transport refrigeration” (CRF 2.F.1.d), and based on new available statistics data and product information,

HFC-227ea are applied for the category “medical dose inhalers” (CRF 2.F.4) for the full time series.

Further, the emission factors applied for charge and operation of refrigerant in “stationary air-condition” (CRF 2.F.1.f) are consequently defined as 0,5% pr. charge and 10% in operation emission until 2009, and 3% operation emission from 2010 and forth.

Last years, the group “other HFC’s” were split into five sub-groups – “HFC-410A”, “HFC-449A”, “HFC-452A” and “other HFC’s” and “HFO’s”. The sub-division is introduced for the full time series. Furthermore, the category “large and medium commercial refrigeration and stationary aircondition” for HFC-134a is divided into two categories – “large and medium commercial refrigeration (CRF 2.F.1.a)” and “stationary air-condition (CRF 2.F.1.f)” because new emission factors are applied for stationary air condition. The division is introduced for the full time series.

In 2017, a reduction of the emission factors for 2.F.1.f stationary A/C was introduced. From 2010 and onward, the emission factor is reduced from 10% to 3% in operation. This change is introduced to meet the later data for leakage rates from stationary A/C, which indicate levels of 1-3%. Furthermore, the new emission factor is in same range as the emission factor uses by the other Nordic countries (between 2-6%). The revision and update has changed the historical emissions from 2010 and forth. In 2017, a separate subcategory for heat pumps was introduced as well with consumption starting from 2009. It provides a more accurate picture of consumption and emissions related to HFC-407C and HFC-410A.

Finally, the reference years for calculating *emission from stock* are changed according to the IPCC guidance. Year T1 for emission from stock is now same year as product is placed on the market instead of the year after product is placed on the market. The revision comprises the full time period 1995-2030 and assures consistency in the methodology as outlined in IPCC’s guidance.

Appendix 3 describes the specific emission factors, etc. used for emission calculations.

1.2 Danish consumption and emission of F-gases

1.2.1 Import

HFCs

Overall, there has been a slight decrease in consumption of all refrigerants.

The total bulk import reported by importers (minus re-export) of pure HFCs and HFC blends is 202.1 tonnes. Compared to 2018, where the import was 269.2 tonnes, the total import has decreased with approx. 67.1 tonnes. In recent years, there is a general decreasing trend for HFCs. Instead, there is noticed an increase of HFOs, as a low GWP substitute for HFCs. The import of HFOs was 22,7 tonnes in 2019.

There has been a decrease in bulk import of HFC-134a with approximately 42.8% compared to 2018, amounting to a total of 96.6 tonnes in 2019. The decrease is mainly related to a lower consumption of HFC-134a in mobile air condition (MAC).

Further, we see a decrease in the bulk import of HFC-4040a. In 2019, the import was reduced 11.3%, amounting to a total of 31,2 tonnes compared to 42.6 tonnes in 2018.

The bulk import of HFC-410a has also decreased with about 6.6%, amounting to 28.7 tonnes in 2019. HFC-410A is used in various heat pumps and the import is related to installation and service of heat pumps. The decreased is considered related to an increased substitution to HFO 1234ze.

The import of HFC-407C was 27.7 tonnes in 2019, which is a decrease of 0.6 tonnes compared to 2018. HFC-407C is applied in stationary air condition.

The import of HFC-507 has increased with 1.3 tonnes compared to 2018, amounting to a total of 1.7 tonnes in 2019. The consumption of HFC-507 has decreased significantly in the past five years. The increase in 2019 is expected as occasionally and not a trend.

The import of HFC-449a was 7.9 tonnes in 2019, a slight decrease compared to 2018, and import of HFC-452a amounted to 6.2 tonnes in 2019 which are a decrease of 50% compared to 2018. The use of these two substances are related to introduction as "low GWP" refrigerants", and are e.g. drop-in substitute for HFC-404A, that has decreased considerable the recent years.

SF₆

The overall consumption of SF₆ in 2019 was 1.4 tonnes. This is a decrease of approx. 0.6 tonnes compared to 2018. Consumption of SF₆ derives mainly from use for power switches in high-voltage power systems. Only a very small amount is used for research, laboratories, and optics fibre production

PFCs

No consumption of PFCs was reported for 2019. In previous years, the PFC consumption has only been related to etching in optics fibre production and as a part of the refrigeration blend HFC-413A (contains 9% perflourpropan).

GWP average for HFCs

The EU F-gas Regulation includes the provision for the phase down of the quantities of F-gases (and blends) placed on the EU market by producers and importers. By 2030, the GWP target is a reduction to 21% with 2015 as reference year.

Table 1 below calculate the development of GWP average for HFCs placed on the Danish market. In 2019 the average GWP is reduced with 14,1% compared to 2015.

TABLE 1. DEVELOPMENT OF AVERAGE GWP FOR F-GASES PLACED ON DK MARKET, TONNES

	HFCs	Consumption, t	GWP	%
2019	405.055	202	2.005	85,9
2018	535.267	269	1.988	85,2
2017	620.689	271	2.292	98,2
2016	670.894	305	2.203	94,4
2015	656.914	282	2.333	100,0

1.2.2 Emission

The GWP-weighted actual emissions of HFCs, PFCs, and SF₆ in 2019 were 408,154 tonnes CO₂ equivalents. The emissions have decreased with approx. 158,200 tonnes compared to 2018, where the corresponding emissions were 566,351 tonnes CO₂ equivalents as seen in table 3.

The total emissions in 2019 have decreased for both HFCs, PFCs and SF₆. The decrease is mainly caused by substantial decrease of emissions from medium and large commercial refrigeration and stationary air-condition. Further there are a decreased emission from MAC.

The F-gas emission accounts for approx. 1-1.5% of the total national GWP emission from all sources.

In table 2 below, consumption, actual emissions and stock in products are summarised.

TABLE 2. Consumption, actual emissions, stock, actual emission and gwp contribution from f-gases, tonnes

Source	Sustance	Consumption and imports, DK, tonnes	Stock, tonnes	Actual emissions, tonnes	GWP contribution, CO ₂ eqv. tonnes	GWP contribution in total, CO ₂ eqv. tonnes
Refrigerants for commercial stationary refrigerators and A/C systems	HFC-134a	55,3	287,2	27,30	39 044	
	HFC-404A	28,5	194,8	27,32	107 150	
	HFC-407C	27,6	300,4	12,26	21 751	
	HFC-410A	28,7	194,1	6,33	13 204	
	HFC-449A	7,9	15,7	0,57	798	
	HFC-452A	0,9775	23,8	2,39	5 107	
	HFC-507	1,7	40,0	4,45	17 748	
	Other HFCs	2,093	31,6	3,71	7 736	
	PFC	0,0	0,0	0,00		
	All substances					212 538
Fridges/freezers Refrigerants	HFC-134a	0,8	150,8	1,3	1 924	
	HFC-404a	0,8	29,8	0,3	1 139	
	PFC-14	0,0	0,2	0,0	7	
	All substances					3 071
Fridges/freezers Insulationfoam	HFC-134	0,0	0,4	0,0	43	
	HFC-152	0,0	0,0	0,0		
	All substances					43
Mobile A/C systems	HFC-134a	40,4		40,4	57 796	57 796
Refrigerated vans	HFC-134a	0,1	0,1	0,0	21	
	HFC-404A	1,9	16,1	3,6	14309	
	HFC-452A	4,2	0,0	0,0		
	All substances					14 330
Aerosol sprays etc.	HFC-134a	0,0	0,0	2,0	2 860	2 860
Thermostates	HFC-152a	0,0	66,7	5,4	664	664
MDI	HFC-134a	0,0	0,0	0,0		
	HFC-227ea	0,0	0,0	0,0		
	All substances					
Heat pumps	HFC-407c	0,0	105,2	7,5	13349	
	HFC-410A	82,3	314,1	10,4	21 700	
	All substances					35049
Liquid cleaners	PFC	0,0	0,0	0,0		
Fibre optics	PFC-14	0,1	0,0	0,1	1101	
	PFC-318	0,0	0,0	0,0		
	HFC-23	0,0	0,0	0,0	0	
	All substances					1 101
Double glazing	SF ₆	0,0	1,5	2,5	56230	56230
High-voltage power	SF ₆	1,3	99,3	0,6	12 731	12 731
Laboratories	SF ₆	0,1	0,0	0,1	2280	2280
Total	HFCs	289,0	1770,7	161,0	335 805	
	PFCs	0,1	0,2	0,1	1108	
	SF ₆	1,4	100,8	3,1	71 241	
GWP contribution	Total		1871,7	164,3	408 154	408 154

In Figure 1, the relative contributions of HFCs, PFCs, and SF₆ to the total emission in CO₂-equivalents are shown for application areas for 2019.

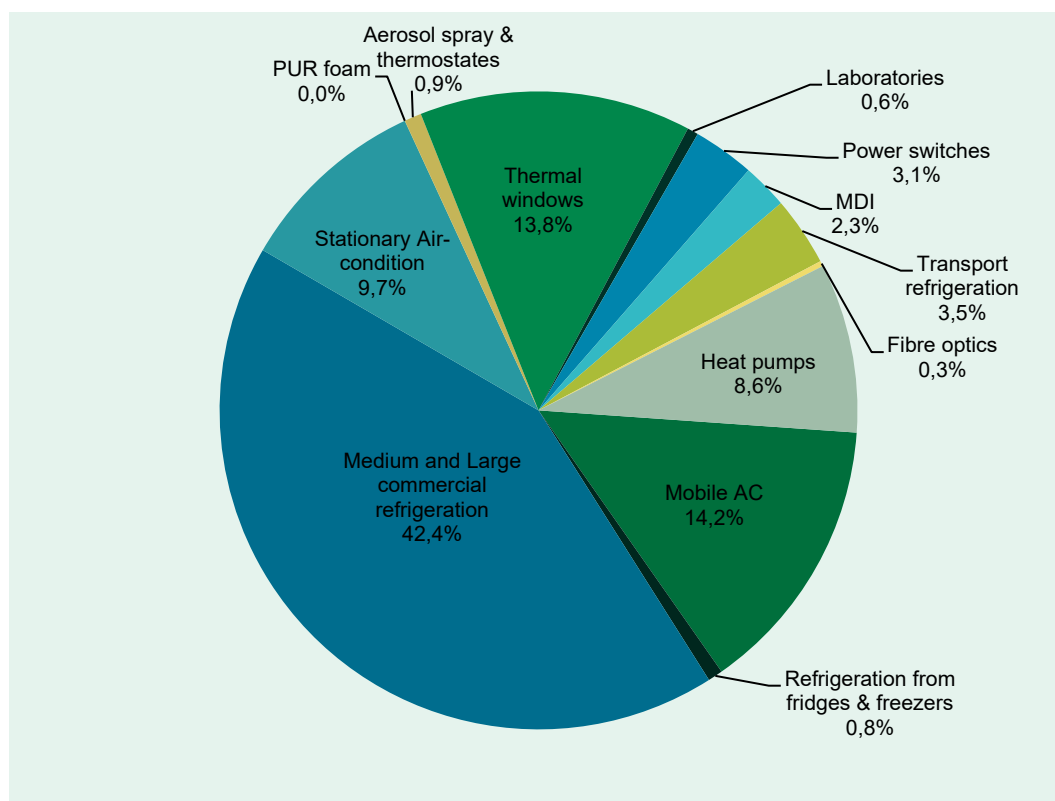


FIGURE 1. Relative distribution of gwp emissions by application area

The figure shows that the emissions from refrigerants used in medium and large size commercial refrigerators account for the largest GWP contribution. This source covers 42.4% of the total actual emission of F-gases in 2019. The main contribution is from HFC-404A that accounts for 107,150 tonnes CO₂-equivalents, which accounts for approximately 26.5% of the total F-gas emissions in 2019. This is a decrease compared to 2018.

The second-largest source for GWP contribution occurs from mobile A/C (MAC), accounting for 57,796 tonnes CO₂-equivalents, which constitutes 14.2%.

The third-largest source accounting for 13.8% of GWP contribution is from SF₆ released from stock in double glazed windows.

Emissions of HFC from stationary air-condition contributes with 9.7%. Heat pumps contribute with 8.6% of the total GWP contribution and emissions from transport refrigeration contribute with 3.5% of the total GWP contribution.

The total HFCs' contribution is estimated to comprise 82.2% of the overall GWP contribution in 2019, emissions of SF₆ are 17.5% and emissions of PFCs contribute with 0.3%.

HFCs

Actual emissions of HFCs have been calculated to 335,805 tonnes CO₂ equivalents. In 2018, emissions were approximately 493,160 tonnes CO₂ equivalents. It is a decrease of 157,355 tonnes CO₂ equivalents.

SF₆

Actual emissions have been calculated to a GWP contribution of 71,241 tonnes CO₂ equivalents. In 2017, emissions were 73,184 tonnes CO₂ equivalents, so there has been a slight decrease. The decrease occurs from reduced stock emissions from windows.

PFCs

The emission of PFCs originates from stock emission from commercial refrigeration containing HFC-413A (contains 9 per cent Perfluoropropan), in 2019, there is a marginal stock left. The total GWP-weighted PFC emission was 1,108 tonnes CO₂ equivalents in 2019.

1.2.3 Trends in total GWP contribution from F-gases

The figure below shows the trend in Danish GWP contributions from HFCs, PFCs, and SF₆ for 1992-2019. The differences from the present calculations of the total GWP value compared with earlier calculation methods are illustrated in the figure.

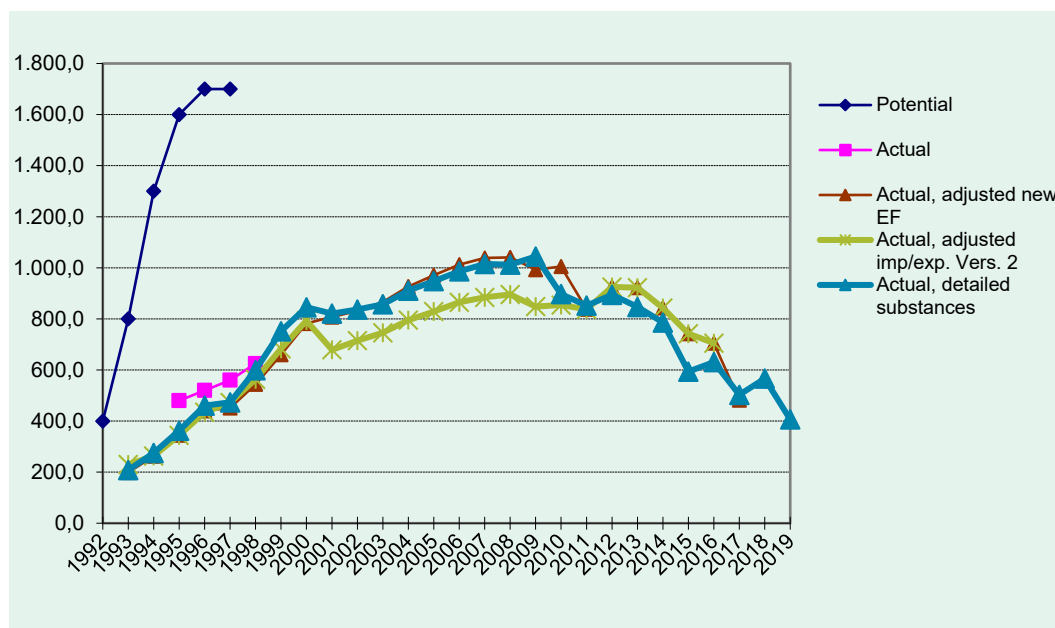


FIGURE 2. Gwp-weighted potential, actual and, adjusted actual emissions 1992-2019, 1.000 tonnes co₂ equivalents

The figure shows that the GWP emission has increased from 1992-2008 and peaked in 2009, whereafter it indicates a significant decreasing trend from 2013 onwards.

The 2019 emission calculation and the time series in figure 2 has been revised due to the introduction of blowing agent HFC-227ea applied in MDI from 2015, refrigerant HFC-452A for the category "transport refrigeration" (CRF 2.F.1.d), and revised emission factors for operational emission from stationary air-condition" (CRG 2.F.1.f) from 2010 and so forth. This has entailed that the historical emissions have been changed slightly.

The reduced emission factor corresponds now with the emission factor level used by the other Nordic countries where the emission factors range from 1-6%. The decision of implementing the new reduced emission factor from 2010 is based on expert judgement of when the technologies improved and next generation units were introduced to the market.

Development in the GWP contribution for the period can also be seen in table below.

TABLE 3. Total gwp-contribution from hfc's, pfc's, sf₆, 1992-2019 determined according to the four different methods of calculation applied during this period, 1 000 tonnes co₂ equivalents.

Year	Potential	Actual	Actual, adjusted imp/exp. Vers. 2	Actual, adjusted new EF	Actual, detailed substances
1992	400,0				
1993	800,0		230,3	198,8	207,9
1994	1.300,0		263,2	262,8	275,4
1995	1.600,0	480,0	344,1	344,5	362,3
1996	1.700,0	520,0	434,7	440,1	460,5
1997	1.700,0	560,0	472,5	451,2	473,3
1998		625,0	563,7	543,6	599,3
1999			682,8	659,7	751,4
2000			793,3	782,2	845,6
2001			679,0	807,2	820,6
2002			715,0	831,5	836,6
2003			746,0	866,2	857,2
2004			795,0	926,6	910,5
2005			829,0	971,3	948,0
2006			865,0	1.012,4	986,3
2007			884,4	1.038,7	1.015,1
2008			895,7	1.040,7	1.012,5
2009			848,4	992,7	1.044,1
2010			854,4	1.004,9	897,3
2011			837,7	837,7	852,2
2012			925,2	925,2	894,3
2013			922,4	922,4	846,7
2014			842,7	842,7	786,1
2015			742,0	742,0	593,7
2016			705,0	705,0	630,8
2017				482,0	502,8
2018					566,4
2019					408,2
2020					

The table 4 below shows the time series 1993-2019 and the 2019-2030 projections of F-gases as GWP contributions.

The emission projections are determined by assuming a 'steady state' consumption using 2019 as the reference year and the cut-off dates for the phasing-out of specific substances, cf. the Statutory Order regulating certain industrial greenhouse gases /30/.

The calculated GWP contribution expresses actual emissions, adjusted for imports and exports.

TABLE 4. Total gwp-emission from hfc's, pfc's sf₆, 1993-2030, 1 000 tonnes co₂ equivalents.

Year	HFC-134a	HFC-152a	HFC-404A	HFC-401A	HFC-402A	HFC-407C	HFC-410A	HFC-449A	HFC-452A	HFC-507	HFC-23	HFC-227ea	Other HFCs	Other HFCs	PFCs	SF ₆	Total pr year
1993	106,3	3,7	-	-	-	-	-	-	-	-	-	-	-	-	-	97,8	207,9
1994	148,7	5,7	2,8	-	0,2	-	-	-	-	-	-	-	-	-	0,1	118,0	275,4
1995	228,8	5,4	21,8	-	1,5	-	-	-	-	-	-	-	0,4	-	0,6	103,8	362,3
1996	318,2	4,0	69,1	-	4,6	-	-	-	-	-	-	-	3,5	-	2,1	59,2	460,5
1997	272,0	1,9	107,3	0,0	8,3	0,4	-	-	-	0,5	-	-	7,2	-	5,2	70,5	473,3
1998	332,6	1,2	170,4	0,0	9,5	2,9	-	-	-	3,7	-	-	9,8	-	11,5	57,6	599,3
1999	381,6	4,7	249,6	0,1	10,8	6,2	-	-	-	7,3	-	-	12,4	-	15,7	62,9	751,4
2000	397,7	2,0	313,2	0,1	11,9	12,8	-	-	-	11,4	-	-	17,0	-	22,6	56,8	845,6
2001	398,5	1,6	284,1	0,1	11,6	19,4	0,0	-	-	18,4	10,4	-	20,1	-	27,9	28,6	820,6
2002	399,8	1,6	307,1	0,1	10,3	25,9	0,2	-	0,1	18,2	-	-	21,4	-	28,0	24,0	836,6
2003	359,6	0,2	348,4	0,1	8,2	39,3	0,8	-	0,7	21,8	-	-	23,3	-	24,6	30,1	857,2
2004	370,6	0,8	375,9	0,1	7,8	52,7	1,2	-	0,6	23,4	-	-	25,5	-	20,5	31,5	910,5
2005	353,0	0,2	430,3	0,1	6,8	64,3	1,7	-	0,6	25,0	-	-	26,6	-	18,8	20,7	948,0
2006	347,9	0,4	451,4	0,1	6,1	69,0	2,3	-	0,5	24,7	1,2	-	27,2	-	21,2	34,4	986,3
2007	352,3	0,5	472,8	0,1	5,5	74,1	3,8	-	0,6	24,9	3,6	-	26,7	-	21,2	29,1	1.015,1
2008	333,1	0,6	485,0	0,0	6,2	76,4	6,2	-	1,4	26,4	1,8	-	26,6	-	18,4	30,4	1.012,5
2009	325,5	0,6	506,0	0,0	6,4	83,2	9,0	-	1,8	24,8	3,6	-	28,4	-	19,5	35,3	1.044,1
2010	305,3	0,7	444,0	0,0	1,1	27,3	3,1	-	1,6	24,9	5,3	-	24,1	-	10,2	37,0	884,7
2011	261,5	0,6	403,2	0,1	-	33,2	4,0	-	2,1	29,6	5,3	-	17,7	-	7,7	77,5	842,5
2012	283,1	0,7	385,2	-	-	36,0	4,9	-	2,3	26,9	1,8	-	15,5	-	3,5	129,5	889,5
2013	233,4	0,9	362,4	-	-	42,4	6,1	-	2,5	25,6	-	-	15,5	-	3,7	149,9	842,6
2014	203,5	0,7	319,0	-	-	42,2	10,4	-	2,8	34,2	2,1	-	10,5	-	2,7	154,0	781,9
2015	138,9	0,8	236,4	-	-	39,6	14,0	-	3,9	22,8	-	0,8	10,0	0,0	0,0	121,4	588,5
2016	158,4	0,8	249,7	-	-	48,0	18,1	-	4,3	30,3	-	1,0	12,7	0,0	0,0	104,2	627,5
2017	118,5	0,7	194,1	-	-	45,3	22,6	-	2,5	26,3	-	1,6	12,7	0,0	1,1	75,5	500,8
2018	156,6	0,7	229,6	-	-	41,7	27,9	0,0	2,9	23,8	-	2,1	9,6	0,0	0,0	73,2	568,2
2019	108,8	0,7	122,6	-	-	35,1	34,9	0,8	5,2	17,7	-	2,3	7,7	0,0	1,1	71,2	408,2
2020	102,8	0,6	106,7	-	-	33,4	42,3	1,4	6,5	16,7	-	2,3	5,9	0,1	1,1	47,1	366,8
2021	68,4	0,6	62,2	-	-	26,6	42,9	1,4	8,8	19,1	-	2,3	6,0	0,1	1,1	16,4	255,8
2022	60,4	0,5	52,0	-	-	30,6	42,9	1,4	8,4	14,7	-	2,3	5,8	0,1	1,1	15,3	235,4
2023	56,3	0,4	51,4	-	-	19,4	40,6	1,4	8,3	15,0	-	2,3	5,8	0,1	1,1	15,4	217,5
2024	47,3	0,4	51,8	-	-	17,8	53,5	1,4	9,6	15,7	-	2,3	5,8	0,1	1,1	15,4	222,2
2025	47,0	0,3	56,0	-	-	16,2	46,4	1,4	10,5	13,3	-	2,3	7,0	0,1	1,1	15,5	217,1
2026	41,2	0,3	53,7	-	-	14,6	44,9	1,4	9,0	16,2	-	2,3	4,7	0,1	1,1	15,6	205,2
2027	31,8	0,2	49,6	-	-	13,3	45,3	1,4	8,1	17,6	-	2,3	6,2	0,1	1,1	15,7	192,7
2028	28,2	0,1	49,7	-	-	10,5	41,5	1,4	8,7	10,2	-	2,3	7,3	0,1	1,1	15,8	176,8
2029	20,1	0,1	46,5	-	-	7,5	39,7	1,4	5,9	-	-	2,3	-	0,1	1,1	15,8	140,6
2030	14,7	0,0	35,6	-	-	8,9	33,1	1,4	5,9	-	-	2,3	-	-	1,1	15,9	118,9
Sum	7.912,6	45,8	8.156,8	0,9	116,7	1.116,2	644,5	16,4	126,1	631,1	34,9	32,7	466,4	0,9	300,1	2.087,8	21.689,9

The future scenario for the F-gas emission 2018-2030 is based on a steady-state scenario and indicates a clear reduction. The estimated increase in 2018 is in particular related to decommissioning emissions of medium and large refrigeration containing HFC-134a or HFC-404A.

2. Methodology

The emission calculation is made in accordance with the IPCC guidelines (Intergovernmental Panel on Climate Change) /4/. In comparison to last year's calculation, some methodological adjustments have been made.

The methodology includes calculation of the actual emissions of HFCs, PFCs, and SF₆. In this calculation of actual emissions, the release from stock of greenhouse gases in equipment and in products has been taken into account, and adjustments have been made for imports and exports of the greenhouse gases in products.

Appendix 3 describes the specific emission factors, etc.

2.1 Scope and definition

The emission calculation of the actual emissions of HFCs, PFCs and SF₆ has over years become increasingly more comprehensive and accurate along with the development of internationally approved guidelines (IPCC Guidelines) and guidance (IPCC Good Practice Guidance /22/) and the provision of increasingly detailed data.

The evaluation of the actual emissions includes quantification and calculation of any imports and exports of HFCs, PFCs, and SF₆ in products, and it includes substances in stock. This is in accordance with the latest and most accurate method of calculation (Tier 2) among the options provided for in the IPCC Guidelines /4/.

Estimation of Consumption and emissions

The calculation of consumption, emissions and stock was carried out on the basis of information from five sources:

- Importers, agency enterprises, wholesalers, and suppliers
- Consuming enterprises, and trade and industry associations
- Danish Environmental Protection Agency
- Official trade statistics
- Previous evaluations of HFCs, PFCs and SF₆ /32/.

Information for the present emission calculation is collected through questionnaire surveys combined with follow up telephone interviews of stakeholders relevant for F-gas consumption and emissions.

The result of the project is primarily based on the information received from enterprise and importer respondents and information from KMO and Danish EPA is used as a supplement to verify parts of the collected data.

The information collected from importers and suppliers is compared with information from consumer enterprises in order to monitor any discrepancies between purchase and sales information and to identify application of the use of substances. In some cases, the use of individual substances was estimated on the basis of two sources, since the majority of the consuming enterprises were known. In cases where not all enterprise end-users had specified the application area for substances, the

consumption of individual substances was estimated on the basis of the information provided by importers, suppliers, and any trade and industry-related associations.

There may be inconsistencies between the information provided by suppliers and enterprise end-users. This is partly due to imports from other EU countries, changes in inventories of substances, or a lack of correlation between the quantities sold and the quantities consumed. It is also partly due to a certain amount of uncertainty in the method of calculation used by enterprises. However, sales and consumption information has been harmonised.

The estimated average degree of uncertainty in the report's consumption figures (quantities sold and bought) is about 10-15 per cent, and slightly greater for data regarding application areas. The degree of uncertainty in the calculation of actual emissions is estimated at 20-25 per cent, depending on import/export information for the specific products.

The calculation of F-gas emission is based on a calculation of *actual emissions*.

Actual emissions are emissions in the relevant year, accounting for the time lapse between consumption and emissions. Actual emissions include Danish emissions from production, from products during their lifetimes, and from the disposal of products. Actual emissions for the specific areas of application are determined on basis of the following approaches:

Tier 2 "Top-down" analysis

In the Tier 2 Top-down analysis, emissions are determined on the basis of information on consumption in the various areas of application and calculated or estimated emissions in the area of application (emission factors).

Calculating consumption for refilling mobile A/C (MAC)

The method for calculating the consumption of refrigerant related to MAC is based on collection of data from all Danish importers of HFC-134a supplying refrigerants to refilling in mobile A/C systems installed in vehicles. While these importers only operate in the MAC refrigeration market the import data can be isolated to consumption of refrigerants to MAC. Therefore the following methodology can be applied corresponding to the Tier 2 top down approach:

Consumption/Sale from MAC refrigerant importers in year X = refilled stock = actual emission from MAC in Denmark in year X.

Tier 2 "Bottom-up" analysis.

In the Bottom-up analysis, the estimated emissions for a specific application area are based on information from producers using substances in production and in products; information on imports and exports of products; information on the technological developments within the application areas; information on the average amount of greenhouse gases contained in products; and information on the lifetime of products and actual emissions during their use and disposal.

Tier 2 bottom-up analyses were carried out within selected areas over a number of years. The analysis quantified the stock and, in some cases, Danish emission factors. Detailed analyses were carried out for commercial refrigerators, mobile A/C systems, fridges, freezers, and SF₆ power switches. Analyses were evaluated in separate reports /2, 11, 16/.

Bottom-up comprises:

- Screening of the market for products in which greenhouse gases are used.
- Defining the average content of greenhouse gases per product unit.
- Defining the lifetime and the disposal emissions of products.
- Identifying technological characteristics and trends of significance for emissions of greenhouse gases.

- Calculating imports and exports on the basis of defined key figures, Statistics Denmark's foreign trade statistics, and information from relevant industries.

Results from this analysis have been expanded in the present evaluation of actual emissions.

As far as possible, the consumption and emissions of greenhouse gases have been evaluated individually, even though consumption of certain HFCs has been very limited. This was done to ensure transparency and consistency in time in the calculation of the sum of HFCs as their GWP value. However, it was necessary to operate with a category for "Other HFCs", as not all importers and suppliers have detailed records of sales of individual substances. There has been a growing trend of using new, low-GWP substances. Therefore, this year's calculation has introduced several new, separate substances categories – HFC-410A, HFC-449A, HFC-452A and HFOs. These substances were previously calculated as "Other HFCs" category, but due to the steady increase in use, import and emissions, they are now calculated separately for each of these substances. This change will provide more accurate conclusions on GWP trends. This change has also entailed that the historical emissions have been changed slightly.

Uncertainty varies from substance to substance. Uncertainty is highest for HFC-134a due to its widespread application in products imported and exported. The largest uncertainty in the analysis of substances by application areas is assessed to concern the breakdown of consumption of HFC-404A and HFC-134a between commercial stationary refrigerators and mobile A/C systems. This breakdown is significant for the short-term (about 5 years) emissions calculations, but will balance in the long term. This is because the breakdown is only significant for the rate at which emissions are released.

Appendix 3 shows an overview of all application areas included with descriptions of the bases of calculation.

In Appendix 1, the table shows the F-gases covered by the Kyoto Protocol under the Climate Change Convention, including their chemical formulas and new revised GWP values (Global Warming Potential).

2.2 IPCC requirements to emission factors, application areas and new F-gases

The new revised emission factors from IPCC for a number of F-gases are fully implemented. The change in emission factors are revised for the full time period 1992-2030 to assure consistency in the methodology as outlined in IPCC's guidance.

According to the IPCC guidance, new application areas have been identified by IPCC. The application areas are:

- TFT flat panel displays (not occurring)
- Photovoltaics (not occurring)
- Heat transfer fluid (not occurring)
- Military applications (investigated further)
- Accelerators (not occurring)
- Soundproof windows (already included in DK calculation)
- Adiabatic properties - shoes and tyres (already included in DK calculation)
- Closed cell foam (already included in DK calculation)
- Hard cell foam (already included in DK calculation)

The new application areas were assessed in relation to the Danish context, and one new application area – “Military Appliances” was relevant to investigate further to determine, whether new consumption- and emission areas should be included in the F-gas emission calculation. The conclusion is, that there is no new use of F-gases from “Military Appliances” and it is therefore not relevant to include this area in the F-gas calculation.

Further, a number of new F-gases have to be included in the emission calculation. The new F-gases are NF₃, and new HFC's and PFC's. Starting from the 2013 calculation, all new F-gases have been included. The new HFC's were already included in previous calculations, and the new PFC's are not used in DK. According to NF₃, a particular survey among relevant importers has been conducted in 2015 and no import or stocks of NF₃ was identified.

2.3 Explanation of terminology

The following terms and abbreviations are used throughout this report:

- *Enterprise end-user*: A producer that uses greenhouse F-gases in connection with production processes in the enterprise.
- *Emission factor*: The factor used in the calculation of emissions from a product or a production process.
- *Consumption*: Consumption includes the quantities of substances reported in Denmark in the year in question via imports from wholesalers and information from Danish producers.
- *Importer*: Enterprises in Denmark that sell the relevant substances on the Danish market.
- *KMO*: The Danish Refrigeration Installers' Environmental Scheme
- *Stock*: The amount of substance contained in equipment and products in use in Denmark.

3. F-gas import and consumption

3.1 Assessment of new F-gases

From 2013 it is required by IPCC to include a number of new F-gases in the emission calculation. These new F-gases have therefore been screened to determine whether the substances are used as bulk or imported in products in Denmark.

3.1.1 **NF₃**

Nitrogen trifluoride (NF₃) is used in the plasma etching of silicon wafers. Today NF₃ is predominantly employed in the cleaning of chambers in the high volume production of liquid crystal displays and silicon-based thin film solar cells. NF₃ has been considered as an environmentally preferable substitute for SF₆ or PFC. NF₃ is also used in hydrogen fluoride and deuterium fluoride lasers, which are types of chemical lasers. Since 1992, when less than 100 tons were produced, production has grown to an estimated 8.000 tons in 2010 and is projected to increase significantly.

All national importers of F-gases have been requested to provide information about eventual import of new F-gases. None has imported NF₃ in 2018 or in any previous year.

NF₃ is therefore considered non-existing in Denmark.

3.1.2 **New HFC's**

The new HFC's are:

- HFC-152
- HFC-161
- HFC-236cb
- HFC-236ea
- HFC-245fa
- HFC-365mfc

No import of HFC-245fa has been registered. No importers confirm import of any other of these HFC's in 2018. Previously, a minor amount of HFC-245fa was imported as refrigerant, and also HFC-365mfc was imported for a few years as foam blowing agent before it was banned in 2006 due to the Danish legislation of phasing out F-gases in among others foam blowing. These two F-gases have already been included in the previous emission calculations.

3.1.3 **New PFC's**

The new PFC's are:

- Perfluorodecalin – PFC-9-1-18 (C₁₀F₁₈)
- Perfluorocyclopropane (c-C₃F₆)

No importers confirm import of these PFC's in 2018 or any previous years.

3.2 Import of substances

An overall picture of the trends in imports of F- gases is given in table 4 above, based on information from importers for the years 1992-2019.

3.2.1 HFC's

HFCs were imported by nine enterprises in 2019, either for resale or use in own production.

The total bulk import (minus re-export) of pure HFCs and HFC blends was in 2019 202.1 tonnes. Compared to 2018, where the import was 269.2 tonnes, total bulk import had decreased significantly with 66.2 tonnes, a reduction of 25%. The import has decreased for all substances except for HFC-507a.

Import of HFC-134a has decreased with 42.8 tonnes in 2019 compared to 2018, with a total import of 96.6 tonnes in 2019. The import is reduced significantly compared to 2018.

The bulk import of HFC-404a was 31.2 tonnes in 2019 and has decreased with 11.3 tonnes compared to 2018. The reason is a decrease in consumption related to commercial refrigeration because of new available low GWP refrigerants, (e.g. HFC-449A and HFC-452A) and increased decommissioning of old HFC-404A refrigeration systems.

Import of HFC-410a has decreased by 6.6 tonnes in 2019 compared to 2018, amounting to 28.7 tonnes in 2019. HFC-410A is used in stationary refrigeration.

The bulk import of HFC-407C is 27.7 tonnes in 2019 and almost the same compared to 2018. HFC-407C is used in heat pumps and is a substitute refrigerant for HCFC-22 in commercial refrigeration systems. Since 2009, the import of HFC-407C has been stable slightly decreasing, stabilizing at around 27-35 tonnes. Most old HCFC-22 appliances are replaced now, so consumption of HFC-407C is mainly related to fillings in heat pumps.

The bulk import of HFC-507a is 1.7 tonnes in 2019 and has increased with 1.3 tonnes compared to 2018. HFC-507a is a drop in refrigerant in old commercial refrigeration systems.

Import of HFC-152a was 0 tonnes in 2019. 2017 was the first year where no consumptions were reported.

The import of the category 'Other HFCs' has decreased from 2.7 tonnes in 2018 to 2.1 tonnes in 2019. There is no clear trend for this category.

In 2019, the import of HFC-449a was 7.9 tonnes. In 2018 the import was 8.4 tonnes. The import of HFC-452a was 6.2 tonnes in 2019, which is a decrease of 6.1 tonnes compared to 2018. Even though both HFC-449a and HFC-452a is low GWP refrigerant, the trend is decreasing for both refrigerants. It indicates a wider use of HFOs as substitutes instead. The import of HFOs in 2019 was 22.7 tonnes, an increase of 12.5 tonnes compared to 2018.

No HFC-152a was imported.

With regard import of HFC's in products, two categories are calculated:

- HFC-134a in medical doze inhalers (MDI)
- HFC-227ea in medical doze inhalers (MDI)
- HFC-410A in heat pumps

In 2019, the import of HCF-134a in MDIs was calculated to be 5.0 tonnes and the import of HFC-227ea in MDI was calculated to be 0.7 tonnes.

The import of HFC-410A in heat pumps is estimated to 82.3 tonnes. The estimate is based on approx. 60,000 units of air-air and air-water heat pumps sold in Denmark in 2019.

3.2.2 Sulphur hexafluoride

Five importers reported that they have imported and sold 1.4 tonnes of sulphur hexafluoride in 2019, which is a reduction of 0.6 tonnes since 2018. Sulphur hexafluoride is mainly used in power switches, but very small amounts are also used as an agent for plasma erosion in production of optical fibres, microchips and in laboratories for analytical purposes, particle accelerators and radio-therapy equipment.

3.2.3 Perfluorinated hydrocarbons

No import of PFC-14 (Trifluoromethan - CF₄) has been reported in 2019 (and 2018). In 2017, the import was approx. 14 kg. PFC-14 is used as low temperature refrigerant in stand alone commercial applications.

Table 5 below contains an overview of the bulk import of all F-gases since 1992.

TABLE 5. Developments in bulk imports of F-gases, tonnes

Year / Substance	HFC-134a	HFC-152a	HFC-401A	HFC-402A	HFC-404a	HFC-407C	HFC-507	HFC-410A	HFC-449A	HFC-452A	Other HFCs ¹	All HFCs	SF6	PFCs
1992	20,0	4,0	-	-	-	-	-	-	-	-	-	24,0	15,0	-
1994	524,0	51,0	-	-	36,0	-	-	-	-	-	-	611,0	21,0	-
1995	565,0	47,0	-	-	119,0	-	-	-	-	-	14,0	745,0	17,0	1,5
1996	740,0	32,0	-	-	110,0	-	-	-	-	-	20,0	902,0	11,0	3,0
1997	700,0	15,0	-	-	110,0	-	-	-	-	-	16,0	841,0	13,0	8,0
1998	884,0	14,0	15,0	10,0	146,0	17,0	10,0	-	-	-	15,0	1.111,0	9,0	-
1999	644,6	35,8	15,0	10,0	193,7	40,0	10,0	-	-	-	29,0	978,1	12,1	7,9
2000	711,1	16,4	9,5	4,2	193,1	44,7	23,8	-	-	-	24,0	1.026,8	9,0	6,9
2001	472,8	11,1	4,1	0,8	126,2	40,3	2,2	0,7	-	-	22,7	680,9	4,7	3,7
2002	401,6	11,9	-	-	188,7	89,1	14,4	2,7	-	3,3	18,9	730,6	1,4	2,0
2003	241,2	3,3	0,2	1,7	145,0	96,8	9,2	2,7	-	-	40,3	540,4	2,2	0,5
2004	306,5	11,0	-	-	252,6	101,3	10,6	2,6	-	-	25,0	709,6	2,3	0,3
2005	235,4	5,5	-	-	162,4	61,6	5,4	3,1	-	-	28,4	501,8	3,6	0,5
2006	280,7	11,6	-	-	176,4	70,6	6,1	7,7	-	-	72,4	625,4	4,2	-
2007	160,7	13,0	-	-	129,9	50,5	11,4	12,8	-	4,5	13,2	396,0	5,4	0,7
2008	164,5	15,0	-	-	114,1	76,8	1,8	16,9	-	2,7	175,0	566,8	5,9	68,9
2009	175,3	12,0	-	-	106,9	49,3	7,0	12,1	-	-	16,8	379,4	4,3	0,9
2010	160,6	15,0	-	-	103,6	42,4	9,1	16,0	-	3,0	3,4	353,1	3,8	0,9
2011	180,5	8,0	-	-	105,0	42,8	6,1	15,5	-	2,0	12,0	371,9	3,1	0,9
2012	171,7	13,0	-	-	99,5	42,7	12,1	21,5	-	2,0	1,5	364,1	2,6	0,5
2013	154,5	22,6	-	-	91,5	43,8	20,5	20,6	-	2,0	11,0	366,3	3,6	0,5
2014	139,4	5,8	-	-	84,5	37,2	22,9	17,5	-	7,0	28,8	343,0	2,0	0,1
2015	115,9	7,0	-	-	76,6	27,9	13,3	20,9	-	-	20,0	281,6	1,5	0,3
2016	150,4	4,0	-	-	68,1	37,6	13,7	19,7	-	-	11,0	304,6	3,1	0,0
2017	124,4	-	-	-	80,2	30,9	2,6	22,1	-	2,5	8,0	270,8	2,8	0,1
2018	139,4	-	-	-	42,6	28,2	0,4	35,3	8,4	12,3	2,7	269,2	2,0	-
2019	96,6	-	-	-	31,2	27,7	1,7	28,7	7,9	6,2	2,1	202,1	1,4	-

1) The category 'Other HFCs' includes all HFC's not explicated separately.

3.3 Consumption by categories

The assessment of consumption divided into categories is estimated on basis of information from importers and producers, and on sales reports to the Danish Refrigeration Installers' Environmental Scheme (KMO). Table 6 below shows consumption distributed according to application.

TABLE 6. Consumption of hfc distributed on categories, tonnes

Use / Substance	134a	152a	404a	407c	410a	449a	452a	507a	Other HFCs	Total
Insulation foam	-	-	-	-	-	-	-	-	-	-
Foam systems	-	-	-	-	-	-	-	-	-	-
Soft foam	-	-	-	-	-	-	-	-	-	-
Other applications (2F4)	-	-	-	-	-	-	-	-	-	-
Stand-alone commercial applications (2.f.1.b)	0,8	-	0,8	-	-	-	-	-	0,0	1,6
Medium and large commercial refrigerators (2.f.1.a)	47,3	-	28,5	-	1,7	-	4,0	1,0	2,1	84,5
Transport refrigeration (2.f.1.d)	0,1	-	1,9	0,0	-	-	-	4,2	-	6,3
Mobile A/C (2.F.1.e)	40,4	-	-	-	-	-	-	-	-	40,4
Stationary A/C	8,0	-	-	27,6	-	28,7	4,0	1,0	-	69,3
Total	96,6	-	31,2	27,7	1,7	28,7	7,9	6,2	2,1	202,1

3.3.1 Consumption of HFC refrigerant

The total consumption of HFC refrigerants is decreasing. For all HFCs but HFC-507a, the consumption has declined compared to the past several years.

The decreasing level of refrigerants in commercial refrigeration systems is in particular a consequence of National Danish rules where establishment of new HFC installations after 1st of January 2007 was banned /30/.

The use of HFCs as refrigerant in commercial refrigeration and stationary A/C systems is covering 76.1 per cent of the total consumption in 2019. The most commonly used refrigerants in commercial refrigeration are still HFC-404A and HFC-134a.

The consumption of HFC-134a as a refrigerant in fridges/freezers was 0.8 per cent of the total consumption in 2019. Most producers have substituted to alternative refrigerants or moved production facilities to other countries.

The consumption of refrigerants in mobile A/C covers 20.5 per cent of the total consumption.

The consumption of refrigerants in vans and lorries for transport refrigeration covers approx. 1 per cent of the total consumption.

Consumption by application area is based on information from producers and importers, who report sales of substances from refrigerator installers and automobile workshops, etc. (only when drawing-off is more than one kg).

The consumption of refrigerants for household fridges and freezers is calculated on the basis of information from enterprise end-users.

The consumption of refrigerants in commercial, stationary A/C systems and MAC are estimated using data and information from importers.

The table below shows the consumption by weight of refrigerants according to sub categories.

TABLE 7. Consumption of hfc as refrigerants according to sub categories

Substance / Application	Fridges /freezers	Commercial refrigerators	Stationary A/C systems	Mobile A/C systems	Refrigerated vans and trucks	Total	Percent
134a	0,8	47,3	8,0	40,4	0,1	96,6	49,1
404A	0,8	28,5	-	-	1,9	31,2	15,9
407C	-	-	-	-	-	27,6	14,0
410A	-	-	-	-	-	28,7	14,6
449A	0,0	-	27,6	-	-	7,9	4,0
452A	-	-	28,7	-	-	1,0	0,5
507	-	1,7	4,0	-	-	1,7	0,9
Others	-	2,1	-	-	-	2,1	1,1
Total	1,6	79,6	68,3	40,4	2,0	196,8	100,0
Percent	0,8	42,9	34,7	20,5	1,0	100,0	

3.3.2 Consumption of HFC as blowing agent and as propellant

In 2019, the uses of HFCs as propellants in aerosols for specific industrial purposes were phased out and substituted with HFO-1234ze. There is no longer issued DEPA's grant of exemptions and production while HFO-1234ze for aerosol use are in compliance with existing legal requirements.

It is estimated that in 2019, the consumption of HFC-134a in MDIs was 5.0 tonnes and consumption of HFC-227ea in MDIs was 0.7 tonnes. The trend is increasing. Since 2015, the consumption of HFCs in MDI has increased 42% because of extended use of MDIs with HFCs.

As in previous years, there have been no reports of consumption of HFCs for chemical production, fire-extinguishing equipment, or other application areas apart from those mentioned.

3.3.3 Consumption of SF₆

The overall consumption of SF₆ in 2019 was approximately 1.4 tonnes. Consumption of SF₆ is used for power switches in high-voltage power systems, plasma erosion and laboratories, including research laboratories (particle accelerators) and medical services such as radiotherapy and electronic microscopes. The registered suppliers of SF₆ provide gas to all mentioned areas as mentioned above and it is checked through contact to consumers that no parallel import occurs (including military). The registered import from suppliers is therefore valid to determine the actual SF₆ consumption.

Consumption of SF₆ in production of double glazed thermal windows has been banned since 1st of January 2003 /30/.

TABLE 8. Consumption of sf6 by sub categories, tonnes

Application area	DK consumption, tonnes
Power switches in high-voltage plants	1,31
Plasma erosion	0,00
Laboratories	0,10
Total	1,41

3.3.4 Consumption of PFCs

No import of PFCs has been reported in 2019 and 2018. In 2017 a minor import of PFC-14 was used in production of fibre optics as for extreme low-temperature refrigerant in stand-alone commercial appliances for laboratories, where no other alternatives are suitable.

3.3.5 Consumption of HFOs

The import of HFO's in 2019 was 22.7 tonnes. The import of HFO-1234yf was 12.7 tonnes, used as new refrigerant in mobile air conditioning and other refrigeration. The import of HFO-1234ze was 10 tonnes used for commercial refrigeration and aerosols.

4. Emission of F-gases

This section reports the actual emissions of the greenhouse F-gases HFCs, PFCs, and SF₆ for 2019. All emissions are calculated as *actual* emissions according to IPCC's tier 2 methodologies.

The emission calculation is based on the revised GWP values as stated in the IPCC guidance (ref. to appendix 1).

The calculation is based on the reports on consumption of these substances analysed by application areas (section 3.2). For relevant product groups, adjustments have been made for imports and exports of the substances in products (see also chapter two for description of methodology). The specific emission calculation refers to appendix 4 which shows the particular emission factors, calculation method and assumptions, determination of IPCC Tier method etc., in relation to calculation of emissions from individual substance and application areas /4, 16/.

The total GWP-weighted actual emission of HFCs, PFCs, and SF₆ in 2019 is calculated to 408,154 tonnes CO₂ equivalents. The corresponding emissions in 2018 were approx. 566,351 tonnes CO₂ equivalents. Consequently, we see a solid decreased emission of approx. 28% compared to 2018, mainly because of decreased use of HFC-404A in large and medium size commercial refrigeration and decreased use of HFC-134a from MAC.

The consumption and GWP contribution for HFCs, PFCs, and SF₆ for this year and last years are shown in table 9 below.

TABLE 9. Bulk consumption, import in products and gwp contribution by substance group, tonnes

Substance group	2018		2019	
	Consumption and imports, DK, tonnes	GWP contribution, CO2 eqv. tonnes	Consumption and imports, DK, tonnes	GWP contribution, CO2 eqv. tonnes
HFCs	338	493.160	289	335.805
PFCs	0,0	7	0,1	1.108
SF6	2,0	73.184	1,4	71.241
Total		566.351		408.154

4.1.1 Emissions of HFCs from refrigerants

As required in the IPCC guidance for calculation of emission of F-gases a distinction is made between:

- 2.F.1.a - Medium and large Commercial Refrigeration + Industrial refrigeration
- 2.F.1.b - Stand alone Commercial Applications (Fridges and freezers for household use etc.)
- 2.F.1.e - Mobile air conditioning - MAC (in cars, trucks, bus, trains etc.)
- 2.F.1.f – Stationary air condition and heat pumps
- 2.F.1.d - Mobile refrigeration systems (in vans and lorries)

Actual emissions from these sources occur in connection with:

- *Filling* of refrigerants (emission is 0.2 percent to 1.5 per cent of refilled amount depending on application area).
- *Continual release* during the operational lifetime. An assumed average value which account operational leakage including release occurring as a result of accident and damage (depending on application area, the average yearly emission differ from 3 percent to 30 percent).

Emission resulting from *disposal* of items and equipment in the applications differs from 0-20%. For most categories the emission is calculated as 0% because Danish legislation ensures that management and treatment of refrigerants prevent uncontrolled emissions. For heat pumps the emission at decommissioning is estimated as 20% due to lack of control measures with decommissioning of air-air heat pumps from private household.

Appendix 3 shows the specific emission factors used in the calculations.

Medium and large size commercial refrigeration

Commercial refrigeration, used e.g. in retail, supermarket, restaurants etc. or in industry, constitute the largest source of emissions. The most commonly used refrigerants in this product group are HFC-134a, HFC-404A, HFC-449A, HFC-452A and HFC-507c, where HFC-404A stands for the majority of the emissions in 2019.

It is not relevant to adjust for imports and exports of HFCs in large and medium size commercial refrigeration since filling of refrigerants only will take place on site when the units are installed.

Table 10 below shows the consumption, stock and actual emission for the main HFC substances used in Danish large and medium size commercial refrigeration systems. Emissions for HFCs have been converted to CO₂ equivalents in order to take into account the different GWP values of the substances and emissions for 2020 and 2030 in a future scenario are also shown.

TABLE 10. Consumption, stock and actual emissions and gwp contribution from large and medium size commercial refrigeration; gwp contribution for 2018, 2020 and 2030, tonnes

Substance	Consumption 2019	Stock 2019	Actual emission 2019	GWP- contribution 2019	GWP- contribution 2020	GWP- contribution 2030
HFC-134a	47,3	210,5	24,1	34.472	42.487	0
HFC-404A	28,5	175,0	27,3	107.150	94.843	27.637
HFC-449A	4,0	7,7	0,4	611	1.080	1.080
HFC-452A	1,0	22,4	2,4	2.385	2.251	549
HFC-507c	1,7	41,7	4,5	17.748	16.702	0
Other HFCs 1)	2,1	27,9	3,7	3.706	2.804	0
All				166.072	160.166	29.266

¹⁾ The category "other" is calculated based on an assumption that average GWP value is similar to HFC-410A).

As the table indicates, the emissions from commercial refrigeration will continue for several years with a steady state consumption scenario even though there are no installations of new HFC refrigeration systems as a result of the statutory order, which do not allow construction of new installations (larger than 10 kg HFC) after 1st of January 2007.

In the trend analysis, the total emission from this sector is estimated to have reduction of 82,4% in 2030 compared to 2019.

Stationary air condition and heat pumps

Stationary A/C systems are used in office buildings, by retailers etc. for comfort. Heat pumps are used both in private residential houses and In the public/private sector. The most commonly used refrigerants in this product group are HFC-134a, HFC-407C, HFC-410A, HFC-449A, HFC-452A.

A larger amount of HFC-410A is imported in heat pumps. Thus, it is expected that HFC-32 and natural refrigeration will phase out HFC-410A within few years.

Table 11 below shows the consumption, stock and actual emission for the main HFC substances used in stationary refrigeration and heat pumps. Emissions for HFCs have been converted to CO₂ equivalents in order to take into account the different GWP values of the substances and emissions for 2020 and 2030 in a future scenario are also shown.

TABLE 11. Consumption, stock and actual emissions and gwp contribution from stationary refrigeration and heat pumps; gwp contribution for 2019, 2020 and 2030, tonnes

Substance	Import 2019	Stock 2019	Actual emission 2019	GWP-contribution 2019	GWP-contribution 2020	GWP-contribution 2030
HFC-134a	8,0	98,8	3,2	4.573	5.436	2.375
HFC-407C	27,6	302,6	12,3	21.751	22.606	8.877
HFC-407C heat pumps	0,0	84,6	7,5	13.349	10.778	0
HFC-410A	28,7	220,4	6,3	13.204	15.415	9.042
HFC-410A heat pumps	82,3	314,1	10,4	21.700	26.851	24.040
HFC-449A	4,0	8,0	0,1	187	336	336
HFC-452A	1,0	1,0	0,0	4	63	63
All				74.763	81.422	44.669

¹⁾ The category "other" in 2018 is calculated based on an assumption that average GWP value is similar to HFC-410A).

In the trend analysis, the total emission from this sector is estimated to have reduction of 40,2% in 2030 compared to 2019. Low and zero GWP refrigerants will be introduced in a larger scale during the next years, especially for heat pumps. It will have a positive effect on the emission trend. But a recent study from DEPA points out potentials for large accidental emissions from air-air heat pumps installed in private households if preventive control at end of life is lacking /33/. The trend analysis calculates a 20% emission at decommissioning of heat pumps.

Stand alone refrigerators and freezers

Actual emissions from refrigerants in refrigerators and freezers are determined on the basis of consumption adjusted for imports and exports of HFCs. The calculation assumes that the refrigerant is removed and treated upon disposal so that no emission occurs (see appendix 3).

When adjusting for imports and exports, the estimates of imports/exports in Environmental Project no. 523 are used /2/. In this case, exports are assumed to comprise 50% of the consumption pr. year. The calculation is made on the basis of Statistics Denmark's foreign trade statistics /3/ of average figures of the amount of HFC-134a in a standard fridge/freezer manufactured in 1999. These values have not been updated.

The table below shows actual emissions from refrigerators/freezers in 2019, 2020 and 2030.

TABLE 12. Emissions of refrigerants from refrigerators/freezers 2019, 2020 and 2030, tonnes

	HFC-134a			HFC-404A		
	2019	2020	2030	2019	2020	2030
Consumption	0,8	0,8	0,4	0,8	0,8	0,4
Emissions during production	0,0	0,0	0,0	0,0	0,0	0,0
Export	0,4	0,4	0,2	0,0	0,0	0,0
Stock	152,2	117,3	9,6	29,8	25,2	8,3
Emission from stock	1,3	1,0	0,1	0,3	0,2	0,1
Emission from destruction	0,0	0,0	0,0	0,0	0,0	0,0
Actual emission	1,3	1,0	0,1	0,3	0,3	0,1
GWP contribution, 1000 tonnes CO₂ equivalents	1,9	1,5	0,1	1,1	1,0	0,4

Total emissions of HFC-134a and HFC-404A refrigerants from refrigerators/freezers in 2019 were estimated to 3,000 tonnes of CO₂ equivalents. In the future scenario of actual emissions, it is estimated that the total emissions in 2030 will decrease to 500 tonnes CO₂ equivalents caused by a decommissioning and decreasing stock.

Mobile A/C

Emissions from mobile A/C systems are mainly due to leakage and accident damage.

Starting from 2009, the refilled and consumed amount of HFC-134a is calculated based on a Tier 2 top-down approach where the importers of HFC-134a for mobile A/C systems are isolated. The consumption of HFC-134a for mobile A/C systems is used solely for refilling. Car manufacturers outside DK carry out initial filling. With the applied approach it is possible to reduce uncertainties in determining the actual consumption of refrigerants for refilling in vehicles in Denmark.

The use of HFO-1234yf has increased substantially in 2019 as a substitute for HFC-134a in new MAC. The consumption of HFO-1234yf was approx. 12 tonnes in 2019. Without the MAC directive, this amount would probably be HFC-134a instead.

Actual emissions from mobile A/C are stated in the table below.

TABLE 13. Actual emissions of hfc-134a from mobile a/c, 2019, 2020 and 2030, tonnes

	2019	2020	2030
Consumption to refilling	40,4	32,3	3,5
Actual emissions	40,4	32,3	3,5
GWP contribution, 1000 tonnes CO₂ equivalents	57,8	46,2	5,0

Vans and lorries with transport refrigeration system

Actual emissions from mobile refrigeration systems in vans and lorries in 2019 are from HFC-134a, HFC-404a and HFC-452A. The emission is stipulated in the table below.

TABLE 14. Calculation parameters and actual emissions of hfc-134a and hfc-404a from vans and lorries with transport refrigeration system for 2019, 2020 and 2030 tonnes

	HFC-134a			HFC-404A			HFC 452A		
	2019	2020	2030	2019	2020	2030	2019	2020	2030
Consumption	0,1	0,1	0,1	1,9	1,9	1,9	4,2	4,2	4,2
Emissions from filling	0,0	0,0	0,0	0,0	0,0	0,0	0,0	0,0	0,0
Emissions from stock	0,0	0,0	0,0	3,3	2,6	1,9	0,0	0,7	2,0
Stock	0,1	0,1	0,2	18,0	14,4	11,3	0,0	3,5	9,6
Actual emissions	0,0	0,0	0,0	3,6	2,8	1,9	0,0	0,7	2,2
GWP contribution, 1000 tonnes CO2 equivalents	0,0	0,0	0,1	14,3	10,9	7,6	0,0	1,6	4,7

The total actual emission from mobile refrigeration systems in vans and lorries were estimated to 14.300 tonnes of CO₂ equivalents in 2019.

4.1.2 Emissions of HFCs from PUR foam products and propellants

IPCC's default calculation methods have been applied in the calculation of emissions of HFCs used in Polyurethan (PUR) foam plastic products, depending on the type of product:

- 1) Hard PUR foam plastics (closed cell)
- 2) Soft PUR foam plastics (open cell)
- 3) Polyether foam (closed cell)

The calculation methods are summarized in the table below and in appendix four.

TABLE 15. Emission factors in the calculation of emissions from foam plastic products

	Hard PUR foam	Soft PUR foam	Polyether foam
Released during production, %	10%	100%	15%
Annual loss, %	4,5%	-	4,5%
Lifetime, years	15	-	1-10

Insulation foam

There is no longer production of HFC based hard PUR insulation foam in Denmark. This production has been banned in statutory order since 1st of January 2006 /30/.

The import of HFC-134a in products with PUR insulation foam, e.g. household fridges and freezers, is considered to be 0 in 2019. The calculation of actual emissions are therefore only from existing stock of household fridges and freezers.

Actual emissions of HFC-134a from insulating foam are summarised in the table below.

TABLE 16. Calculation parameters and emissions of hfc-134a from insulating foam for 2019 and 2020, tonnes

	2019	2020
Consumption, HFC 134a	0,0	0,0
Emission from production	0,0	0,0
Export	0,0	0,0
Stock	0,4	0,2
Emission from stock	0,0	0,0
Actual emissions	0,0	0,0
GWP contribution, 1000 tonnes CO₂ equivalents	0,0	0,0

From 2021 there will be no more calculated actual emissions from this source, while stock would be phased out.

Aerosol sprays

Emission of HFC-134A from aerosol sprays for industrial purpose is calculated due to the IPCC default. The consumption is divided as an average of 50% for previous year and 50% in actual year /4/.

Total emission from this area amounts in 2019 to 2 tonnes of HFC-134a corresponding to 3,215 tonnes CO₂ equivalents. The emission is technical, while it only occurs from the 50% remaining emission from the 2018 consumption. From 2019 and forth, the use of HFC-134a is phased out and substituted with HFO-1234ze.

From 2020 there will be no more calculated actual emissions from this source.

Medical Dose Inhalers (MDI)

Medical dose inhalers use Norfluran (HFC-134a) or Apafluran (HFC-227ea) as blowing agent in spray-applications.

Until 2015, calculation of emission from MDIs has been based on yearly statistics from Danish Medicines Agency. The period 2015-2018 the Danish Medicines Agency had altered their database and the extracted data on MDI had a different format.

From 2019, the calculation has been improved and based on available public data on sale of MDI spray products pr. dose (medstat.dk) combined with calculated contents of HFCs pr. doze provided by manufactures. The content of Norfluran - HFC-134a is 25-75 mg/pr. dose, depending on product. The content of Apafluran - HFC-227ea is 69-74 mg/pr. dose depending on product. Where no producer information exists, an average of 75 mg/pr. dose is applied.

The emission of HFC-134a and HFC-227ea from medical metered dose inhalers is estimated as 100% of the consumption in the year of application.

A time-series of the emission of HFC-134a from MDI has been included in the F-gas inventory since the application was registered in 1998. A time-series of the emission of HFC-227ea from MDI has been included in the F-gas inventory from 2015, due to the new calculation method.

TABLE 17. Emissions of hfc-134a and hfc-227ea from mdi, tonnes

	HFC 134a	HFC-227ea	Total
Consumption	5,0	0,7	5,7
Actual emissions	5,0	0,7	5,7
GWP contribution, 1000 tonnes CO₂ equivalents	7,1	2,3	9,4

Optical fibre production

Both HFC and PFC were usually used for technical purposes in Danish optics fibre production. HFC-23 is used as a protection and cleaning gas in the production process. The emission factor is therefore defined as 100% release during production. However, HFC-23 was not used in 2019 (and 2018, 2017, 2016, 2015 and 2013). It indicates that HFC-23 has been substituted with other substances not containing F-gasses.

4.1.3 Emissions of sulphur hexafluoride

The actual emission of SF₆ in 2019 has been calculated to 3.2 tonnes, equivalent to a GWP contribution of 71,241 tonnes CO₂ equivalents.

Emissions derive from three sources - power switches, double-glazed windows and laboratories.

Double-glazed windows

Use of SF₆ in double-glazed windows was phased out in 2002, however, there are still emissions from stock in existing double-glazed windows in Danish buildings. The stock is estimated from consumption data from Danish producers of double-glazed windows 1992-2002 and lifetime for double-glazed windows are determined to 20 years.

Emissions from double glazed windows are calculated on following factors:

- 15 per cent emission from production
- 1 per cent gradual emission from stock pr. year
- 80 per cent emission when disposal after 20 years

TABLE 18. Calculation parameters and emissions of sf₆ from double-glazed windows for 2019, 2020 and 2030, tonnes

	2019	2020	2030
Consumption	0,0	0,0	0,0
Emissions from production	0,0	0,0	0,0
Release from fitted double-glazed windows	0,0	0,0	0,0
Exports	0,0	0,0	0,0
Disposal emissions	2,5	1,4	0,0
Stock	1,5	0,1	0,0
Actual emissions	2,5	1,4	0,0
GWP contribution, 1000 tonnes CO₂ equivalents	56,2	32,0	0,0

The future scenario for GWP contribution from double-glazed windows in 2020 shows a decrease to 32,000 tonnes CO₂ equivalents to be compared with 56,200 tonnes of CO₂ equivalents in 2019. The last emissions from stock occurs in 2021.

Power switches in high-voltage transmission stations

Power switches are filled or refilled with SF₆, either for new installation or during service and repair. Filling is usually carried out on new installations and a smaller proportion of the consumption of SF₆ is due to refilling /11/.

Emissions from power switches in high-voltage transmission systems are calculated due to the processes involved in the following way:

- release of 5 per cent on filling with new gas (average figure covering normal operation and failure/accidents)
- gradual release of 0.5 per cent from the stock (average figure covering normal operation and failure/accidents)

These figures are determined in a report of Danish SF₆ use in high-voltage power switches /11/.

No emissions are assumed to result from disposal since the used SF₆ is drawn off from the power switches and re-used internally by the concerned or appropriate disposed through waste collection scheme.

The table below shows the amounts involved in the processes leading to emissions and calculated actual emissions from SF₆ power switches.

TABLE 19. Calculation parameters and emissions of sf₆ from power switches in high-voltage plants 2019, 2020, and 2030, tonnes

	2019	2020	2030
Consumption	1,3	1,3	1,3
Service emissions	0,1	0,1	0,1
Emissions from stock	0,5	0,5	0,5
Stock	99,3	100,1	107,4
Actual emissions	0,6	0,6	0,6
GWP contribution, 1000 tonnes CO₂ equivalents	12,7	12,8	13,7

The trend is a rather stable consumption of SF₆ and consequently a minor contribution to stock.

Laboratory purposes

Consumption of SF₆ in laboratories covers following purposes:

- Plasma erosion in connection with the manufacture of microchips in clean-room laboratories
- Analytical purposes to a limited extend
- Particle accelerators
- Radiotherapy
- Electronic microscopes

The emission is calculated to approx. 0.1 tonnes SF₆ in 2019. The emission is 100% release during consumption and estimated to 2,280 tonnes of CO₂ equivalents. Aarhus University/DTU is the only entity in Denmark using SF₆ in particle accelerators and electronic microscopes.

4.1.4 Emissions of perfluorinated hydrocarbons

Medium and large size commercial refrigerators

There is no longer PFC emission from medium and large size commercial refrigerators.

Optical fibre production

The PFCs are used as a protection and cleaning gas in the production process. The emission factor is therefore determined as 100% release during production. This sector has previously used both PFC-14 and PFC-318 for technical purposes in optical fibre production. However, PFC-318 has not been used in 2013, 2015, 2016, 2017, 2018, nor 2019. No use of PFC-14 has been reported for 2019, but in 2017, there was a minor use of PFC-14 for optical fibre production.

Low temperature stand alone laboratory freezers

PFC-14 can be used for specialized -60 degree low-temperature freezers for laboratory purposes. Use of PFC-14 for this purpose has been registered for the first time in Denmark in 2015. No consumption of PFC-14 for laboratory freezers was reported in 2019.

References

- /1/ Arbejdsrapport nr. 20. Forbrug og emissioner af 8 fluorerede og klorerede kulbrinter (working report no. 20 on consumption and emissions of 8 fluorinated and chlorinated hydrocarbons - only available in Danish), Danish EPA, 1996.
- /2/ Miljøprojekt nr. 523. Ozonlagsnedbrydende stoffer og visse drivhusgasser - 1998 (environmental project no. 523 on ozone-depleting substances and certain greenhouse gases - 1998 - only available in Danish), Danish EPA, 2000.
- /3/ Udenrigshandelen fordelt på varer og land. Januar-december 1989, 1990-1999 (foreign trade analysed by goods and countries. January-December 1989, 1990-1999 - only available in Danish), Statistics Denmark, foreign trade data for 1989, 1990-1999.
- /4/ IPCC, 1997: Revised 1996 IPCC Guidelines for National Greenhouse Gas Inventories. Available at <http://www.ipccnggip.iges.or.jp/public/gl/i-nvs6.htm> (15-04-2008).
- /5/ Ozonlaget og drivhuseffekten (the ozone layer and the greenhouse effect - only available in Danish), Danish EPA, April 1996.
- /6/ Beskyttelse af ozonlaget - nordisk perspektiv (protecting the ozone layer - a Nordic perspective - not available in English), The Nordic Council of Ministers, October, 1997.
- /7/ DEFU Komiterapport 94. Håndtering af SF₆ og dets reaktionsprodukter i elforsyningsanlæg (committee report no. 94 from DEFU (Research Institute for Danish Electric Utilities) about management of SF₆ and its reaction products in electricity supply plants).
- /8/ Methods used to Estimate Emission Inventories of Hydrofluorocarbons, Perfluorocarbons and Sulphur Hexafluoride. Draft report prepared for the UNFCCC secretariat. March Consulting, May 1999.
- /9/ Hvor kommer luftforureningen fra? - fakta om kilder, stoffer og udvikling (where does air pollution come from? - facts about sources, substances and development - only available in Danish). Thematic report from NERI, 29/1999.
- /10/ Substitutes for Potent Greenhouse Gases - 1998 Final Report (HFCs, PFCs and SF₆), Per Henrik Pedersen, Danish EPA 1998.
- /11/ Indsamling og genanvendelse af SF₆ fra højspændingsanlæg (collection and reuse of SF₆ from high-voltage plants - only available in Danish). Tomas Sander Poulsen et al., Danish EPA 2000.
- /12/ Denmark's National Inventory Report - Submitted under the UN Convention on Climate Change. Illerup, J.B., Lyck, E., Winther, M. Rasmussen, E. NERI, 2000. Research Notes No. 127 (<http://arbejdsrapporter.dmu.dk>).
- /13/ Environmental Project No. 1168 2007: Ozone depleting substances and the greenhouse gases HFCs, PFCs and SF₆ - 2005, Danish EPA, 2007.

- /14/ Denmark's National Inventory Report. Submitted under the UN Framework Convention on Climate Change 1990-1999. Emissions Inventories. Department of Policy Analysis. Illerup, Lyck, Winther, 2002. 675 pp Research Notes from NERI 149. (http://www.dmu.dk/1_viden/2_publicationer/3_arbrapporter/rapporter/AR149.pdf).
- /15/ Annual Danish Atmospheric Emissions Inventory. 1999. Illerup, Andersen, Winther, Lyck, Bruun. NERI, Denmark.
- /16/ Revurdering af emissionsfaktorer for kommercielle køleanlæg og mobile A/C og køleanlæg (re-evaluation of emissions from commercial refrigerators, mobile A/C systems and refrigerators - only available in Danish). Poulsen, T.S, COWI; Environmental report no. 766, Danish EPA, 2002.
- /17/ D.A.F prepares statistics of registered vehicles, analysed into various categories of vehicle. These statistics are updated annually and used to calculate Danish filling of HFC-134a in vehicles.
- /18/ Denmark's National Inventory Report. Submitted under the United Nations Framework Convention on Climate Change 1990-2001. Emissions Inventories. Department of Policy Analysis. Illerup, Lyck, Nielsen, Winter, Mikkelsen, 2003. Research Notes from NERI no. 181. http://www.dmu.dk/1_viden/2_Publicationer/3_arbrapporter/rapporter/AR181.pdf
- /19/ Denmark's National Inventory Report. Submitted under the United Nations Framework Convention on Climate Change 1990-2002. Emissions Inventories. National Environmental Research Institute, Denmark. Illerup, Lyck, Nielsen, Winter, Mikkelsen, Hoffmann, Sørensen, Vesterdahl, Fauser. 2004. Research Notes from NERI no. 196. http://www.dmu.dk/1_viden/2_Publicationer/3_arbrapporter/rapporter/AR196.pdf
- /20/ Anvendelse og håndtering af SF₆-gas i højspændingsanlæg over 100kV (use and management of SF₆ in 100kV or more high-voltage plant). ELTRA Memo elt2004-47a of 18 March 2004.
- /21/ Denmark's National Inventory Report 2005. Submitted under the United Nations Framework Convention on Climate Change. 1990-2003. Danmarks Miljøundersøgelser. Illerup, J.B., Lyck, E., Nielsen, M., Winther, M., Mikkelsen, M.H., Hoffmann, L., Sørensen, P.B., Fauser, P., Thomsen, M., & Vesterdal, L. (2005): - Research Notes from NERI 211: 416 pp. (electronic). http://www2.dmu.dk/1_viden/2_Publicationer/3_arbrapporter/rapporter/AR211.pdf
- /22/ Good Practice Guidance. IPCC Switzerland, 2000.
- /23/ Denmark's National Inventory Report 2006. Submitted under the United Nations Framework Convention on Climate Change. 1990-2004. Danmarks Miljøundersøgelser. Illerup, J.B., Lyck, E., Nielsen, M., Winther, M., Mikkelsen, M.H., Hoffmann, L., Sørensen, P.B., Fauser, P., Thomsen, M., & Vesterdal, L. (2005): - Research Notes from NERI 211: 416 pp. (electronic). http://www2.dmu.dk/1_viden/2_Publicationer/3_fagrapporter/rapporter/FR589.pdf
- /24/ Denmark's National Inventory Report 2007. Submitted under the United Nations Framework Convention on Climate Change. 1990-2005. National Environmental Research Institute, University of Aarhus. Illerup, J.B., Lyck, E., Nielsen, O.K., Mikkelsen, M.H., Hoffmann, L., Gyldenkerne, S., Nielsen, M., Winther, M., Fauser, P., Thomsen, M., Sørensen, P.B. & Vesterdal, L. (2007): - NERI Technical Report 632: 642 pp. (electronic). http://www2.dmu.dk/Pub/FR632_Final.pdf
- /25/ Environmental Project No. 1234 2008: Ozone depleting substances and the greenhouse gases HFCs, PFCs and SF₆, 2006, Danish EPA, 2008.

- /26/ Denmark's National Inventory Report 2008. - Emission Inventories 1990-2006 - Submitted under the United Nations Framework Convention on Climate Change. National Environmental Research Institute, University of Aarhus. Nielsen, O.-K., Lyck, E., Mikkelsen, M.H., Hoffmann, L., Gyldenkerne, S., Winther, M., Nielsen, M., Fauser, P., Thomsen, M., Plejdrup, M.S., Illerup, J.B., Sørensen, P.B. & Vesterdal, L. (2008). NERI Technical Report no. 667. 701 pp
- /27/ Danish Environmental Protection Agency (DEPA), 2015: The greenhouse gases HFCs, PFCs and SF6. Danish consumption and emissions. Environmental Project No 1842.
<http://mst.dk/service/publikationer/publikationsarkiv/2016/mar/danish-consumption-and-emission-of-f-gases/>
- /28/ Nielsen, O.-K., Lyck, E., Mikkelsen, M.H., Hoffmann, L., Gyldenkerne, S., Winther, M., Nielsen, M., Fauser, P., Thomsen, M., Plejdrup, M.S., Albrechtsen, R., Hjelgaard, K., Johannsen, V.K., Vesterdal, L., Rasmussen, E., Arfaoui, K. & Baunbæk, L. 2010: Denmark's National Inventory Report 2010. Emission Inventories 1990-2008 - Submitted under the United Nations Framework Convention on Climate Change and the Kyoto Protocol. National Environmental Research Institute, Aarhus University, Denmark. 1178 pp. – NERI Technical Report No 784.
<http://www.dmu.dk/Pub/FR784.pdf>
- /29/ Nielsen, O.-K., Mikkelsen, M.H., Hoffmann, L., Gyldenkerne, S., Winther, M., Nielsen, M., Fauser, P., Thomsen, M., Plejdrup, M.S., Albrechtsen, R., Hjelgaard, K., Bruun, H.G., Johannsen, V.K., Nord-Larsen, T., Bastrup-Birk, A., Vesterdal, L., Møller, I.S., Rasmussen, E., Arfaoui, K., Baunbæk, L. & Hansen, M.G. (2013). Denmark's National Inventory Report 2013. Emission Inventories 1990-2010 - Submitted under the United Nations Framework Convention on Climate Change and the Kyoto Protocol. Aarhus University, DCE – Danish Centre for Environment and Energy, 1167 pp. Scientific Report from DCE – Danish Centre for Environment and Energy No. 19. <http://www.dmu.dk/Pub/SR19.pdf>.
- /30/ Bekendtgørelse om regulering af visse industrielle drivhusgasser, Bek. Nr. 552, 02/07 2002.
<https://www.retsinformation.dk/Forms/R0710.aspx?id=12578>.
- /31/ Nielsen, O.-K., Plejdrup, M.S., Winther, M., Nielsen, M., Gyldenkerne, S., Mikkelsen, M.H., Albrechtsen, R., Thomsen, M., Hjelgaard, K., Fauser, P., Bruun, H.G., Johannsen, V.K., Nord-Larsen, T., Vesterdal, L., Møller, I.S., Schou, E., Suadicani, K., Rasmussen, E., Petersen, S.B., Baunbæk, L. & Hansen, M.G. 2016. Denmark's National Inventory Report 2015 and 2016. Emission Inventories 1990-2014 - Submitted under the United Nations Framework Convention on Climate Change and the Kyoto Protocol. Aarhus University, DCE – Danish Centre for Environment and Energy, 943pp. Scientific Report from DCE – Danish Centre for Environment and Energy. <http://dce2.au.dk/pub/SR189.pdf>
- /32/ Danish Environmental Protection Agency (DEPA), 2020: Danish consumption and emissions of F-gases in 2018. Environmental Project No 2119. <https://mst.dk/service/publikationer/publikationsarkiv/2020/jan/danish-consumption-and-emission-of-f-gases-in-2018/>
- /33/ Danish Environmental Protection Agency (DEPA), 2020: Utsigtet tab af F-gasser ved demontering af klimaanlæg og varmepumper, ISBN 978-87-7038-159-8 <https://mst.dk/service/publikationer/publikationsarkiv/2020/feb/utsigtet-tab-af-f-gasser-ved-demontering-af-klimaanlaeg-og-varmepumper/>

Appendix 1 GWP values for F-gases

F-gases relevant for Denmark, their chemical formulas and Global Warming Potential (GWP) values used for reporting to the UN Climate Convention and the Kyoto Protocol (values from IPCC new revised GWP values to be implemented no later than 2015)

Substance / Blend	Chemical formula	GWP value
HFC-23	CHF ₃	14 800
HFC-32	CH ₂ FH ₂	675
HFC-41	CH ₃ F	92
HFC-125	C ₂ HF ₅	3 500
HFC-134	C ₂ H ₂ F ₄	1 100
HFC-134a	CF ₃ CFH ₂	1 430
HFC-143	CHF ₂ CH ₂ F	353
HFC-143a	CF ₃ CH ₃	4 470
HFC-152	CH ₂ FCH ₂ F	53
HFC-152a	CF ₂ HCH ₃	124
HFC-161	CH ₃ CH ₂ F	12
HFC-227ea	C ₃ HF ₇	3 220
HFC-236cb	CH ₂ FCF ₂ CF ₃	1 340
HFC-236ea	CHF ₂ CHFCF ₃	1 370
HFC-365mfc	CH ₃ CF ₂ CH ₂ CF ₃	794
HFC-245ca	C ₃ H ₃ F ₅	693
HFC-245fa	CHF ₂ CH ₂ CF ₃	1 030
HFC-404A ⁽¹⁾	Blend	3 922
HFC-401A ⁽²⁾	Blend	18
HFC-402A ⁽³⁾	Blend	2 100
HFC-407C ⁽⁴⁾	Blend	1 774
HFC-408A ⁽⁵⁾	Blend	1 030
HFC-409A ⁽⁶⁾	Blend	0
HFC-410A ⁽⁷⁾	Blend	2 088
HFC-449A ⁽⁷⁾	Blend	1409
HFC-452A ⁽⁷⁾	Blend	1397
HFC-507 ⁽⁸⁾	Blend	3 985
Sulphurhexafluoride	SF ₆	22 800
PFC-14	CF ₄	7 390
PFC-116	C ₂ F ₆	12 200
PFC-218	C ₃ F ₈	8 830
PFC-3-1-10	C ₄ F ₁₀	8 860
PFC-318	c-C ₄ F ₈	10 300
PFC-4-1-12	C ₅ F ₁₂	9 160
PFC-5-1-14	C ₆ -F ₁₄	9 300
PFC-9-1-18b	C ₁₀ F ₁₈	7 500
Perfluorocyclopropanec		17 340
Nitrogen Trifluoride	NF ₃	17 200

(1) Mixture consisting of 52 % HFC-143a, 44 % HFC-125 and 4 % HFC-134a.

(2) Mixture consisting of 53 % HCFC-22, 13 % HFC-152a and 34 % HCFC-124.

(3) Mixture consisting of 38 % HCFC-22, 60 % HFC-125 and 2 % propane.

(4) Mixture consisting of 25 % HFC-125, 52 % HFC-134a, and 23 % HFC-32.

(5) Mixture consisting of 46 % HFC-143a and 7 % HFC-125.

(6) A HCFC mixture consisting entirely of HCFCs, where the GWP - in accordance with the climate convention guidelines - is 0, since the mixture does not contain greenhouse gases. The real GWP value is 1,440.

(7) Mixture consisting of 50 % HFC-32 and 50 % HFC-125

(8)

Mixture consisting of 50 % HFC-125, 50 % HFC-143a.

Appendix 2 Assessment of Good Practice Guidance compliance in DK

F-gas calculation

The Danish F-gas emissions are calculated for the historical years up to 2010. The time series of emissions are calculated using Good practice principles and the series goes back to 1993, but are to be considered complete from the year 1995.

Key Source Categories

F-gases are determined as a key source category. The contribution of F-gases to national greenhouse gas emission is approx. 1.3 % of total emission excl LULUCF in the most recent historical years of the inventories.

Future trend scenarios

A trend scenario is elaborated until 2020. The scenario is based on a “steady state” trend but with an inclusion of dates for phase out of determined substances as stated in legal acts.

Methodology

In the following the relevant decision trees from the GPG (Good Practice Guidance) chapter 3 are investigated with respect to the Danish F-gas calculations compliance with GPG.

For the Danish calculation of F-gases it is basically a Tier 2 bottom up approach which is used, while data is reported from identified importers and users of F-gases in DK. As for verification using import/export data a Tier 2 top down approach is applied. In an annex 3 to the F-gas emission report (Environmental Protection Agency), there is a specification of the applied approach for each sub source category.

Emission factors

Consumption data of F-gases are provided by suppliers and/or producers. Emission factors are primarily defaults from GPG which are assessed to be applicable in a national context.

In case of commercial refrigerants and Mobile Air Condition (MAC), emission are defined as similar to consumption in year X. Consumption is determined from data directly from suppliers.

In case of PUR foam blowing of shoe and use of system foam EF are stated by the producer. Because of the relative low consumption from PUR foam blowing of shoes and system foam a certain uncertainty is assessed as acceptable.

Import/export data

Import/export data for sub category sources where import/export are relevant (fridge/freezers for household) are quantified on estimates from import/export statistic of products + default values of amount of gas in product. The estimates are transparent and described in the annex referred to above.

Import/export data for system foam and commercial refrigerators and stationary air condition are specified in the reporting from importers and users.

Consistency

The time series are consistent as regards methodology. No potential emission estimates are included as emissions in the time series and same emission factors are used for all years.

Reporting and documentation

The national inventories for F-gases are provided on a yearly basis and documented in a yearly report (Environmental Protection Agency).

Detailed data from importers and users and calculations are available and archived in electronic version. The report contains summaries of EF used and information on sources, Further details on methodology and EF are included in annex to the report.

Activity data are described in a spread sheet for the current year. The spread sheet contains the current year as well as the years back. The current version is used with spreadsheet for data for the current year linking to the Danish inventory databases and for the CRF format. In case of changes to the previous reported data this is work out in spreadsheet versions accordingly and reported with explanations as required in the CRF format.

Source specific QA/QC and verification

Comparison of emissions estimates using different approaches

Inventory agencies should use the Tier 1 potential emissions method for a check on the Tier 2 actual emission estimates. Inventory agencies may consider developing accounting models that can reconcile potential and actual emissions estimates and may improve determination of emission factors over time.

This comparison has been carried out in 1995-1997 and for all three years it shows a difference of approx. factor 3 higher emissions by using potential emission estimates.

Inventory agencies should compare bottom-up estimates with the top-down Tier 2 approach, since bottom-up emission factors have the highest associated uncertainty. This technique will also minimise the possibility that certain end-uses are not accounted for in the bottom-up approach.

This exercise has been partly conducted since data from importers (top down) are assessed against data from users (bottom up) to ensure, that import and consumption are more or less equal. The consumption reported from users are always adjusted to the import of substances, which are the most exact data we have.

The uncertainty due to this is, if not all importers are identified because new imported are introduced to the DK market.

National activity data check

For the Tier 2a (bottom-up) method, inventory agencies should evaluate the QA/QC procedures associated with estimating equipment and product inventories to ensure that they meet the general procedures outlined in the QA/QC plan and that representative sampling procedures were used.

No QA/QC plan specifically for the F-gas calculation is developed. However, QC procedures were carried out as described below.

The spread sheets containing activity data has incorporated several data-control mechanisms, which ensure, that data estimates do not contain calculation failures. A very comprehensive QC procedure on the data in the model for the whole time-series has for this submission been carried out in connection to the process which provided (1) data for the CRF background Tables 2(II).F. for the years (1993)-2002 and (2) provided data for potential emissions in CRF Tables 2(I). This procedure consisted of a check of the input data for the model for each substance. As regards the HFCs this checking was done according to their trade names. Conversion was made to the HFCs substances used in the CRF tables etc. A QC was that emission of the substances could be calculated and checked comparing results from the substances as trade names and as the "no-mixture" substances used in the CRF.

Emission factors check

Emission factors used for the Tier 2a (bottom-up) method should be based on country-specific studies. Inventory agencies should compare these factors with the default values. They should determine if the country-specific values are reasonable, given similarities or differences between the national source category and the source represented by the defaults. Any differences between country specific factors and default factors should be explained and documented.

Country specific emission factors are explained and documented for MAC and commercial refrigerants and SF6 in electric equipment. Separate studies has been carried out and reported. For other sub source categories, the country specific emission factor is assessed to be the same as the IPCC default emission factors.

Emission check

Since the F-gas inventory is developed and made available in full in spread sheets, where HFCs data are for trade names, special procedures are performed to check the full possible correctness of the transformation to the CRF-format through Access databases.

Uncertainties

In general uncertainty in inventories will arise through at least three different processes:

- A. Uncertainties from definitions (e.g. meaning incomplete, unclear, or faulty definition of an emission or uptake);
- B. Uncertainties from natural variability of the process that produces an emission or uptake;
- C. Uncertainties resulting from the assessment of the process or quantity, including, depending on the method used,: (i) uncertainties from measuring; (ii) uncertainties from sampling; (iii) uncertainties from reference data that may be incompletely described; and (iv) uncertainties from expert judgement.

Uncertainties due to poor definitions are not expected as an issue in the F-gas inventory. The definitions of chemicals, the factors, sub source categories in industries etc. are well defined.

Uncertainties from natural variability are probably occurring in a short term time period, while estimating emissions in individual years. But in a long time period – 10-15 years, these variabilities levels out in the total emission, because input data (consumption of F-gases) are known and are valid data and has no natural variability due to the chemicals stable nature.

Uncertainties that arise due to imperfect measurement and assessment are probably an issue for:

emission from MAC (HFC-134a)

emission from commercial refrigerants (HFC-134a)

lead to inexact values of the specific consumption of F-gases.

The uncertainty varies from substance to substance. Uncertainty is greatest for HFC-134a due to a widespread application in products that are imported and exported. The greatest uncertainty in the areas of application is expected to arise from consumption of HFC-404a and HFC-134a in commercial refrigerators and mobile refrigerators. The uncertainty on year to year data is influenced by the uncertainty on the rates at which the substances are released. This results in significant differences in the emission determinations in the short term (approx. five years), differences that balances in the long term.

In connection to the work on the Danish National Inventory report general uncertainty estimates for F-gases has been worked out to make the uncertainties for the Danish inventories complete. Refer this report given in the reference list in the main report

Further improvement of uncertainty analysis with respect to the calculation of F-gas emissions are to be considered in future calculations.

Appendix 3 Specification of methods and assumptions

Specification of methods and assumptions for determination of emissions for 1990-2016 as well as projections of GWP in accordance with
IPCC Good Practise Guidance and Uncertainty Management in National Greenhouse Gas Inventory

ID	Source	Substance	Methods	Emission factor	Remarks	Projection assumptions
	OF SUBSTITUTES FOR OZONE-DEPLETING SUBSTANCES (ODS SUBSTITUTES)					
	<i>Refrigerant</i>					
K1	Household fridges and freezers (Stand-alone commercial applica- tions)	HFC-134a	<p>Tier 2 top-down approach:</p> <ul style="list-style-type: none"> - information on refrigerant consumption provided by reports from the main producers of household fridges and freezers in DK. information on refrigerant consumption provided by reports from the main producers of household fridges and freezers in DK, accounting for no less than an estimated 95% of the market. <p>Tier 2 bottom-up approach:</p>	<p>OK according to new IPCC values</p> <ul style="list-style-type: none"> - release on filling = 2% (IPCC default – 0,5-3%) 1 % release from stock per year (IPCC default – 1-10%) Lifetime = 15 years (IPCC default 10-15 years)) Recovery: 100% .Up to and including 2000, the quantity remaining upon disposal was included as 	<p>Stock determined in 1998 for the period 1990-1998 based on information on consumption from Danish producers and estimates based on import/export statistics and average quantity of HFC contained in refrigerant and foam per unit (source: /2/).</p> <p>For the updating of stock, import/export data from 1998 is used, as well as information on annual HFC consumption by</p>	<p>From 2001, net exports of refrigerants in household fridges are assumed to account for 50 per cent of consumption.</p> <p>The consumption in the projection is not influenced by new phasing-out regulations.</p> <p>The effect of charges on HFCs is expected</p>

			- information on imports and exports of refrigerants in products based on the average quantity contained per unit and Danish statistics.	emissions (IPCC default). Legislation in Denmark ensures drawing-off of refrigerant, and consequently, the IPCC default is misleading in the Danish context. (IPCC default 0-80% of initial charge)	Danish producers. 1998 import/export data is = net exports of 141 tonnes HFC-134a refrigerant + net exports of 1.6 tonnes HFC-134a in foam (note: DK's largest exporter does not use HFC for foam moulding, therefore the export of HFC in foam is less than the export of refrigerants).	to give an annual reduction in consumption of 5 per cent in the period 2001-2005.
K2	Commercial refrigerators in retail stores, industry, etc (medium and large commercial refrigerants)	HFC-134a, HFC-404a, HFC-507A, HFC-449A, HFC-452a. other HFCs, PFCs (C ₃ F ₈)	Tier 2 top-down approach: - information on refrigerant consumption was provided by importers/suppliers of refrigerants for commercial refrigerators in DK. - information on distribution of refrigerant consumption at different sites is estimated using information from user enterprises, the KMO and estimates from suppliers.	1.5% on refilling (DK default) (IPCC default 0,5-3%) 10% release from operation and accidents (DK default). Recovery: 88,5% Emission at decommissioning: 11,5% Lifetime: 15 years In the case of re-use it is assumed release occurs during the cleaning process equivalent to 2%. It is <i>good practice</i> not to account for any re-use since the original is accounted for in sales and imports. (IPCC default for lifetime - 15years)	An intrapolation has been conducted for HFC-134a, year 1995. The intrapolation is the average of 1996/1997. Intrapolation is found necessary because 1995 are reference year and the consumption this year was 0 due to lack of data. In 2001/2002 an assessment was made of the national Danish leakage rate from commercial plants. This assessment was carried out by COWI for the Danish EPA. This result has led to a decrease in the leakage rates for filling, operation and disposal in compliance with IPCC guidelines /16/.	From 2007, the consumption of refrigerants merely represents the amount used for refilling existing systems (stock). It is assumed that the consumption of refrigerants for refilling stock will be reduced by 15 per cent in 2007 and will then diminish by 5 per cent per year until 2014.

	Stationary A/C systems in buildings etc.	HFC-134a, HFC-407C, HFC-410A, HFC-449A, HFC-452A	<p>Tier 2 top-down approach:</p> <ul style="list-style-type: none"> - information on refrigerant consumption was provided by importers/suppliers of refrigerants for commercial refrigerators in DK. - information on distribution of refrigerant consumption at different sites is estimated using information from user enterprises, the KMO and estimates from suppliers. 	<p>1990-2009: 1.5% on refilling (DK default) (IPCC default 0,5-3%)</p> <p>2010-2030: 0,5% on refilling.</p> <p>1990-2009: 10% release from operation and accidents (DK default).</p> <p>2010-2030: 3% release from operation and accidents</p> <p>Recovery: 88,5%</p> <p>Decommissioning: 11,5%</p> <p>Lifetime: 15 years</p> <p>In the case of re-use it is assumed release occurs during the cleaning process equivalent to 2%. It is <i>good practice</i> not to account for any re-use since the original is accounted for in sales and imports.</p> <p>(IPCC default for lifetime - 15years)</p>	<p>An intrapolation has been conducted for HFC-134a, year 1995. The intrapolation is the average of 1996/1997. Intrapolation is found necessary because 1995 are reference year and the consumption this year was 0 due to lack of data.</p> <p>In 2001/2002 an assessment was made of the national Danish leakage rate from commercial plants. This assessment was carried out by COWI for the Danish EPA. This result has led to a decrease in the leakage rates for filling, operation and disposal in compliance with IPCC guidelines /16/.</p>	<p>From 2007, the consumption of refrigerants merely represents the amount used for refilling existing systems (stock). It is assumed that the consumption of refrigerants for refilling stock will be reduced by 15 per cent in 2007 and will then diminish by 5 per cent per year until 2014.</p>
K3	Refrigerated vans and lorries	HFC-134a, HFC-404a, HFC-452a	<p>Tier 2 top-down approach</p> <ul style="list-style-type: none"> - information on refrigerant consumption in refrigerated vans and lorries is based on consumption information from refrigerated transport companies as well as data from the KMO. 	<p>0.5% on refilling (DK default)</p> <p>17% from operation annually (DK default, same as IPCC)</p> <p>2% in reuse (DK default)</p> <p>Lifetime = 6-8 years</p> <p>Recovery: 88,5%</p>	<p>In 2001/2002 an assessment was made of the national Danish leakage rate from refrigerated vans and lorries. This assessment was carried out by COWI for the Danish EPA. This result has led to a decrease in the leakage rates for filling and disposal in compliance with</p>	<p>The tax effect has not been included, since refrigerated vans and lorries are exempt from taxes.</p> <p>Stock is defined as 7.7 tonnes (HFC-134a)</p>

					IPCC guidelines. The leakage rate for operation is still 17% in compliance with IPCC guidelines /16/.	and 23.2 tonnes HFC-404A in 2000 /16/. Consumption has been projected as steady state compared to 2001.
K4	Mobile A/C systems	HFC-134a	Tier 2 top-down approach used for gathering of import/sales data from importers that supplies the Danish market with refrigerants to mobile A/C systems.	Consumption = refilling in mobil A/C = emission. Recovery: 88,5% until 2011 After 2011, emissions = consumption to service.		The projection is based on a steady state stock.
	<i>Foam production</i>					
S1	Foam in household fridges and freezers (closed cell)	HFC-134a	Tier 2 top-down + bottom-up approach: - information on refrigerant consumption provided by reports from the main producers of household fridges and freezers in DK. information on refrigerant consumption provided by reports from the main producers of household fridges and freezers in DK, accounting for no less than an estimated 95% of the market.	10% release in foam production (IPCC default) 4.5% release from stock per year (IPCC default) Lifetime = 15 years (DK default) Recovery: 100% 33% remaining upon disposal which is destroyed in incineration and thereby is not released as emissions (DK default).	Stock of HFC in foam determined in 1998 for the period 1990-1998 based on information from Danish producers and estimates based on import/export statistics and average quantity of HFC contained in refrigerant and foam per unit /2/. For the updating of stock, import/export data from 1998 is used, as well as information on annual HFC consumption by Danish producers. 1998 import/export data is = net exports	

					of 141 tonnes HFC-134a refrigerant + net exports of 1.6 tonnes HFC-134a in foam (note: DK's largest exporter does not use HFC for foam moulding, therefore the export of HFC in foam is less than the export of refrigerants).	
S2	Soft foam (open cell)	HFC-134a HFC-152a Other HFCs (HFC-365)	Tier 2 - information on foam blowing agents for soft foam is derived from reports provided by the main producer in Denmark, which still employs HFC in foaming processes. This producer is thought to represent approx. 80% of the Danish soft foam consumption.	Emissions = 100% of the HFCs sold in the current year (IPCC default)		
S3	Joint filler (open cell)	HFC-134a HFC-152a	Tier 2 top-down approach. - There are no longer any Danish producers of joint filler employing HFC as a foaming agent. Emissions are due to previous estimates by producers of imported joint filler products.	Emissions = 100% of imported quantity contained in joint filler in the current year (IPCC default).	The estimated imports in 1998 by a joint filler producer were 10 tonnes HFC-134a and 1 tonne HFC-152a. This estimate was based on the assumption that there is an average of 100 g HFC-134a and 25 g HFC-152a per tin of joint filler imported.	

S4	Foaming of polyether (for shoe soles)	HFC-134a HFC-152a	<p>Tier 2 top-down approach</p> <p>Information regarding consumption is identical to the consumption reported by producer in 1999 + an estimate of imports/exports of HFC in shoe soles, 1998.</p> <p>Tier 2 bottom-up approach:</p> <p>Imports of HFCs contained in shoes are based on the average amount per shoe and on Danish statistics.</p>	<p>Emission (Danish default):</p> <ul style="list-style-type: none"> - Production = 15 % - Use = 4.5 % - Lifetime = 3 years - Disposal = 71.5%, destroyed in incineration and thereby not released as emissions. 	<p>The calculation of the HFC stock in shoe soles is based on the following assumptions: it is assumed that 5% of all shoes with plastic, rubber and leather soles contain polyether containing 8 g of HFC-134a per shoe.</p> <p>Net export with the same consumption in Danish production is 0.3 tonnes HFC-134a.</p>	
S5	System foam (for panels, insulation, etc.)	HFC-134a HFC-152a Other HFCs (HFC-365)	Bottom-up Tier 2 approach on the basis of information from enterprises	Emissions = 0. HFC is used as a component in semi-manufactured goods and emissions first occur when the goods are put into use.	All system foam produced in Denmark is exported, therefore emissions can only occur in the country where the goods are put into use.	
	<i>Aerosols</i>					
D1	Aerosol sprays (industrial products)	HFC-134a	<p>Tier 2.</p> <ul style="list-style-type: none"> - information on propellant consumption is derived from reports on consumption from the only major producers of HFC-containing aerosol sprays in Denmark. The importers are estimated to account for 100% of Danish consumption. 	Emissions = 50% of the HFC sold to this area of application in the current year and 50% of the consumption in the second year (IPCC default for top-down data)	<p>Top-down data.</p> <p>Estimates of imports/exports are based on the producer's assessment of imports equivalent to 20% of Danish production in the current year. Exports are quantified by the producer.</p>	

D2	MDI (metered dose inhalers)	HFC-134a HFC-227ea	<p>Tier 2 bottom-up approach</p> <p>- information on consumption is based on data from the national medical trade statistic concerning total sale of MDI in Denmark. Data from producers concerning product content of HFC-134a is used to calculate amount used pr. year. A unit factor of 72 mg HFC-134a/pr. dose are used for the calculation.</p> <p>The estimate for 2018 is based on 2015, 2016 and 2017. Due to change in the format of the national medical trade statistics. A reduction of 10 per cent is added to the previous year's estimated consumption, to create consistency with the decrease seen throughout previous years.</p>	Emissions = 100 % HFC used in these products are assumed to be consumed the same year.	HFC is used in MDI as a subsidiary for effective inhale of the medicine. It is assumed that 100 % of the subsidiary emits.	
	<i>Solvents</i>					
R1	Liquid cleaners	PFC (C ₃ F ₈ Perfluoropropane)	<p>Tier 2.</p> <p>- information on consumption of PFC in liquid cleaners is derived from two importers' sales reports. This is thought to represent 100% of the Danish consumption of PFCs in liquid cleaners.</p>	Emissions = 50% of the HFC sold to this area of application in the current year and 50% of the consumption in the second year (IPCC good practice for top-down data)		<p>Top-down data</p> <p>Phasing-out cf. Statutory Order 1/9 2002. It is assumed that the consumption is equally distributed over all months.</p>
	<i>Others</i>					

O1	Fibre Optics production	PFC-14 PFC-318 HFC-227ea	Tier 2. - information on consumption of PFC in production of fibre optics is derived from importers' sales report with specific information on the amount used for production of fibre optics.. This is thought to represent 100% of the Danish consumption of PFC-14 and PFC-318 for that purpose	Emission = 100% in the production year = year for consumption	This is a new consumption area which are added for first time in 2006 emission calculation.	It is considered that consumption will be steady state in projection estimated.
	EMISSIONS OF SF ₆ FROM ELECTRICAL EQUIPMENT AND OTHER SOURCES					
	Insulation gas in double glazing	SF ₆	Tier 2 - information on consumption of SF ₆ in double glazing is derived from importers' sales reports to the application area. The importers account for 100% of the Danish sales of SF ₆ for double glazing. In addition, the largest producer of windows in Denmark has provided consumption data, with which import information is compared.	Emission (DK-default): - 15% during production of double glazing. - 1 % per year during the lifetime of the window - Lifetime = 20 years - Disposal - 80% of the filled content of double glazing in the production year. - Net exports = 50% of the consumption in the current year		Emissions data and lifetimes are based on information from the window producers and industry experts in Denmark /2/. The stock is determined on the basis of consumption information provided by importers back to 1990. The first Danish consumption was registered in 1991.

						In the projection of emissions, it is assumed that the consumption of SF ₆ in Danish window production was phased out in 2003, after which emissions only arise from stock.
	Insulation gas in high-voltage power switches	SF ₆	<p>Tier 3c country-level mass-balance approach</p> <p>- information on consumption of SF₆ in high-voltage power switches is derived from importers' sales reports (gas or gas-containing products). The importers account for 100% of the Danish sales of SF₆.</p> <p>The electricity sector also provides information on the installation of new plant and thus whether the stock is increasing.</p>	<p>Emission (Danish default):</p> <ul style="list-style-type: none"> - release on filling = 5% - loss / release in operation = 0.5 % per year - release upon disposal = 0% 		<p>There is one supplier (Siemens) that imports its own gas for filling in Denmark.</p> <p>Suppliers (AAB, Siemens, Alstom) report on new installations.</p> <p>The stock in 2000 was 57.6 tonnes of SF₆, which covers power switches of all sizes in production and transmission plants. The stock has been evaluated on the basis of a questionnaire survey in 1999 which encom-</p>

						passed the entire Danish electricity sector /11/.
	Shock-absorbing gas in Nike Air training footwear	SF ₆	Tier 2 - top-down approach Importer has estimated imports to Denmark of SF ₆ in training footwear.	Lifetime training footwear = 5 years		Importer/wholesaler reports that imports for the period 1990-1998 amounted to approx. 1 tonne, equivalent to emissions of 0.11 tonnes per year in the period 1995-2003. For the period 1999-2005, the importer estimated imports to represent approx. 1/3, corresponding to 0.037 tonnes per year in the period 2004-2010.

Danish consumption and emission of F-gases in 2019

Danish:

Importen af industrielle drivhusgasser udgjorde ca. 202 tons. Det er et fald på ca. 67 tons i forhold til 2018. Den GWP-vægtede aktuelle emission er på ca. 408.000 tons. I forhold til 2018 udgør dette et fald på ca. 158.000 tons. Faldet skyldes især mindre udledninger fra større kommercielle køleanlæg og bil AC. Emissionerne af F-gasser udgør ca. 1-1,5 % af de samlede drivhus gas emissioner fra Danmark

English:

The import HFCs estimated to 202 tonnes. This is a decrease of app. 67 tonnes compared to 2018. The GWP-weighted actual emissions of HFCs, PFCs, and SF6 in 2019 were app. 408.000 tonnes CO2 equivalents. In comparison to 2018 this represents a decrease of app. 158.000 tonnes. The decrease is mainly caused by smaller emissions from large commercial refrigeration installations and MAC. The F-gas emission comprise approx. 1.5% of the total national GWP emission from all sources.



Miljøstyrelsen
Tolderlundsvej 5
5000 Odense C

www.mst.dk